

Industrial reporting under the Industrial Emission Directive 2010/75/EU and European Pollutant Release and Transfer Register Regulation (EC) No 166/2006

Information on the database structure and use

Database version 5

Version 5 – 14/12/2021



Cover design: EEA

Cover photo: Jorge Franganillo, Creative Commons Attribution 2.0 Generic (<https://goo.gl/rqHYk6>)

Layout: EEA

Acknowledgments

This document and associated database was prepared by the [European Environment Agency](#) (EEA) in cooperation with the [European Topic Centre on Air pollution, Transport, Noise and Industrial Pollution](#) (ETC/ATNI).

Should you have any need of clarification, please contact industrial.emissions@eea.europa.eu.

Version control

Version ID	Description	Date
1	Draft for internal review	16/06/2020
3	Draft for internal review	14/12/2020
4	Draft for internal review	18/04/2021
5	Draft for internal review	14/12/2021

About the database

This database contains identification and administrative information reported to the EU Registry on Industrial Sites from 2017. It includes facilities involved in activities listed in Annex I of the European Pollutant Release and Transfer Register (E-PRTR) Regulation and installations involved in activities listed in Annex I of the Industrial Emissions Directive (IED), with additional granularity on installations subject to Chapters III and IV of the IED (large combustion plants (LCPs), waste incinerators (WIs) and co-waste incinerators (co-WIs). The database creates a (geographical) relationship between entities covered by the E-PRTR Regulation and the IED.

The database brings together thematic data formerly reported separately under Article 7 of the E-PRTR Regulation and IED Article 72. It includes annual facility releases to air, water and land of pollutants listed in Annex II of the E-PRTR Regulation (above Annex II release thresholds only) as well as off-site transfers in waste-water. Off-site transfers of waste are also included (above Article 5 thresholds only). The database also includes plant-by-plant data on LCPs including rated thermal input, annual energy input and emissions of SO₂, NO_x and dust.

The release and emissions data covers the period 2007-2020 for facilities and 2016-2020 for LCPs reported under the new E-PRTR/LCP integrated reporting. The inclusion of historical data (2007-2016 for the facilities and 2016-2017 for the LCPs) has been made through the implementation of the mapping exercise lead by EEA, carried out by the ETC/ATNI with the support of reporting countries.

The information is currently under consultation with the reporting countries and some refinements might be performed in a future version of this product.

Information included into v5 of the database are the one reported by countries by 14 December 2021.

Contents

Acknowledgments	2
Version control	2
About the database	2
Contents	3
1 Content of the EEA dataservice entry	4
2 Complete MS Access database	5
2.1 The data model	5
2.2 Tables and fields	11
2.3 Queries	27
2.4 User-friendly tables in Excel	28
2.5 Metadata	30

1 Content of the EEA data-service entry

The EEA data-service is the section of the EEA website where datasets are made available to the public. The permanent link to the industrial reporting dataset is this one: https://www.eea.europa.eu/ds_resolveuid/DAT-238-en.

The link always presents the latest version available. Figure 1 provides an overview of the various files that are offered.

Figure 1: Structure of the EU Registry and EPRTR/LCP

Industrial Reporting under the Industrial Emissions Directive 2010/75/EU and European Pollutant Release and Transfer Register Regulation (EC) No 166/2006

This dataset contains the location and administrative data for the largest industrial complexes in Europe, releases and transfers of regulated substances to all media, waste transfers as well as more detailed data on energy input and emissions for large combustion plants. These data are reported to EEA under Industrial Emissions Directive (IED) 2010/75/EU Commission Implementing Decision 2018/1135 and the European Pollutant Release and Transfer Register (E-PRTR) Regulation (EC) No 166/2006 Commission Implementing Decision 2019/1741. The dataset brings together data formerly reported separately under E-PRTR Regulation Art.7 and under IED Art.72. Additional reporting requirements under the IED are also included.

ProdID: DAT-238-enCreated 07 Oct 2020 — Published 07 Oct 2020 — Last modified 07 Oct 2020 — 2 min read

The screenshot shows a web interface with two tabs: "European data" and "Metadata". The "European data" tab is active. The main content area is titled "Industrial Reporting database" and contains a description of the database. Below the description, there are four download links, each with a blue arrow pointing to a label on the right side of the page:

- Industrial Reporting database v2 October 2020 (ZIP archive)** (65.45 MB Download file) → **Microsoft Access Database**
- Industrial_Reporting_Metadata_v1 (PDF document)** (978.50 KB Download file) → **This metadata document**
- Industrial reporting Excel extracts v2 October 2020 (ZIP archive)** (52.71 MB Download file) → **User friendly Excel files**

2 Complete MS Access database

The European industrial reporting dataset is provided in its complete version in Microsoft Access database format. This section outlines the structure of the data, the interpretation of the data fields and the metadata of the file.

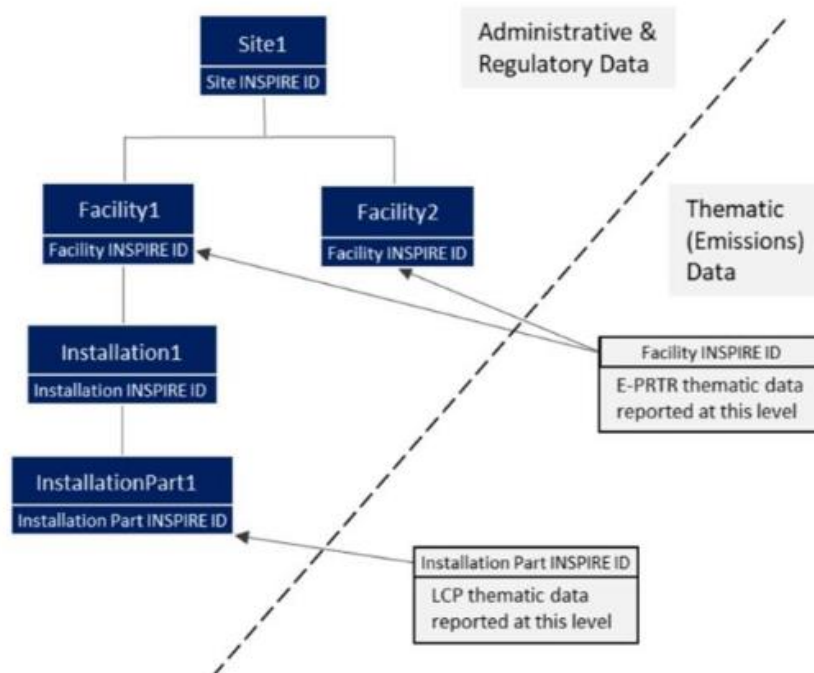
2.1 The data model

The data model has **four geographical hierarchical levels**: production sites, production facilities, production installations and production installation parts. These four geographical levels provide an increasing level of detail on a given industrial activity. Figure 2 outlines the hierarchy in the data model and links between the two reporting streams.

- ***Production site*** represents the highest level in the hierarchy and thus can encompass a number of entities in the lower level.
- ***Production facilities*** correlate with those under the scope of Annex I of the E-PRTR Regulation. However, as a parent production facility must be reported when an installation is reported, some production facilities may not fall under the E-PRTR regulation.
- ***Production installations*** correlate with the definition of 'installation' provided by the IED, but, similarly to production facilities, a parent installation must be reported when a production installation part is reported, so some installations will not be subject to Annex I of the IED.
- ***Production installation parts*** correlate with large combustion plants (LCPs), waste incineration (WI) and co-waste incineration (co-WI) plants. Thematic (i.e. releases and emissions) data is reported at the production facility level and at the production installation part level (LCPs only).

The administrative and thematic data are linked by the INSPIRE ID, a unique ID reported for each entity that will remain constant throughout the entities lifetime.

Figure 2: Hierarchy of administrative and thematic components in the data model



In order to include historical data for E-PRTR (2007-2016) and LCPs (2016-2017) data from the 2017 reporting have been used in order to map Facilities and Installation Part reported under the EU Registry against the Facilities reported under E-PRTR and Plants reported under LCP. For facilities and LCP with no mapping against the 2017 EU registry, a dummy hierarchical structure has been created in order to ensure consistency within the database.

A local ID including either the FacilityID or the PlantID (e.g. 12345678.FACILITY or 12345.PART) has been created and a namespace (country code.EEA, e.g: AT.EEA) have been created to ensure a unique INSPIRE ID.

The database has 33 tables consisting of four core tables linked to sub-tables containing additional information and two metadata tables. Its structure and relationships are shown in Figure 3 further below.

The **0a_DataCollectionMetadata_EUReg** table contains information about the delivery on the EEA's Central Data Repository (CDR) for identification and administrative data for entities reported under the EU Registry on industrial Sites (EU Registry).

0b_DataCollectionMetadata_EPRTR_LCP contains information about the delivery on the EEA's CDR for thematic data for entities reported under the E-PRTR+LCP integrated reporting stream.

1_ProductionSite contains basic data for each site reported by each country in the EU Registry. This includes name and location.

2_ProductionFacility contains basic data for each facility reported by each country reported in the EU Registry. This includes name, location and parent company details. Some facilities included are not subject to the E-PRTR Regulation.

2a_ProductionFacilityDetails contains further details on facilities reported to the EU Registry. This includes status and number of employees.

2b_EPRTTRAnnexIOtherActivity contains information on the other activities reported for facilities subject to the E-PRTR Regulation. The main activity is listed in the **2_ProductionFacility** table.

2c_Function contains information on the main economic activity of the facilities subject to the E-PRTR Regulation.

2d_CompententAuthorityEPRTTR contains information on the competent authority regulating the facilities subject to the E-PRTR Regulation.

2e_ProductionVolume contains information on the production of facilities subject to the E-PRTR Regulation reported under the E-PRTR+LCP integrated reporting stream.

2f_PollutantRelease contains data on each pollutant release to air, water and land reported to the E-PRTR+LCP integrated reporting stream including the type of pollutant and quantity released. The **2f1_PollutantRelease_MethodClassification** table contains data on measurement/calculation methods for each release.

The **2g_OffsitePollutantTransfer** contains data on each pollutant transfer in wastewater reported to the E-PRTR+LCP integrated reporting stream including the type of pollutant and quantity transferred. The **2g1_OffsitePollutantTransfer_MethodClassification** contains data on the measurement/calculation method for each transfer reported.

The **2h_OffsiteWasteTransfer** table contains data on transfers of waste reported to the E-PRTR+LCP integrated reporting stream including the type of waste and quantity transferred as well as information about whether the waste was transferred within or out of the country. The **2h1_OffsiteWasteTransfer_MethodClassification** table contains data on the measurement/calculation methods used.

3_ProductionInstallation contains basic data for each installation reported under the EU Registry. This includes name, location and parent production facility. Some reported installations are not subject to the IED.

3a_ProductionInstallationDetails contains further details of installations reported to the EU registry. This includes status and information on site visits.

3b_IEDAnnexIOtherActivity contains information on the other activities (in addition to the main activity) reported for installations subject to the IED. The main activity is listed in the **3_ProductionInstallation** table.

3c_PermitDetails contains information on the permitting for installations subject to the IED.

3d_BATConclusions contains information on BAT conclusions relevant to the installations subject to the IED.

3e_BATDerogations contains information on derogations granted to installations subject to the IED.

3f1_eSPIREIdentifiers and **3f2_ETSIdentifiers** tables contain information on the eSPIRE and ETS Identifiers of installations, respectively.

3g_CompententAuthorityInspections table contains information on the competent authority undertaking site inspections at the installations subject to the IED.

3h_CompententAuthoritPermits table contains information on the competent authority permitting the installations subject to the IED.

3i_StricterPermitConditions table contains information on installations whose permitted emission limit values are stricter than those required under the IED.

3j_OtherRelevantChapters table contains information on the installations subject to Chapters III, IV, V and VI of the IED.

4_ProductionInstallationPart contains basic data for each large combustion plants (LCPs), waste incinerators (WIs) and co-waste incinerators (co-WIs). This includes name, location and plant type.

4a_ProductionInstallationPartDetails table contains further details on the installation part including status and operating hours.

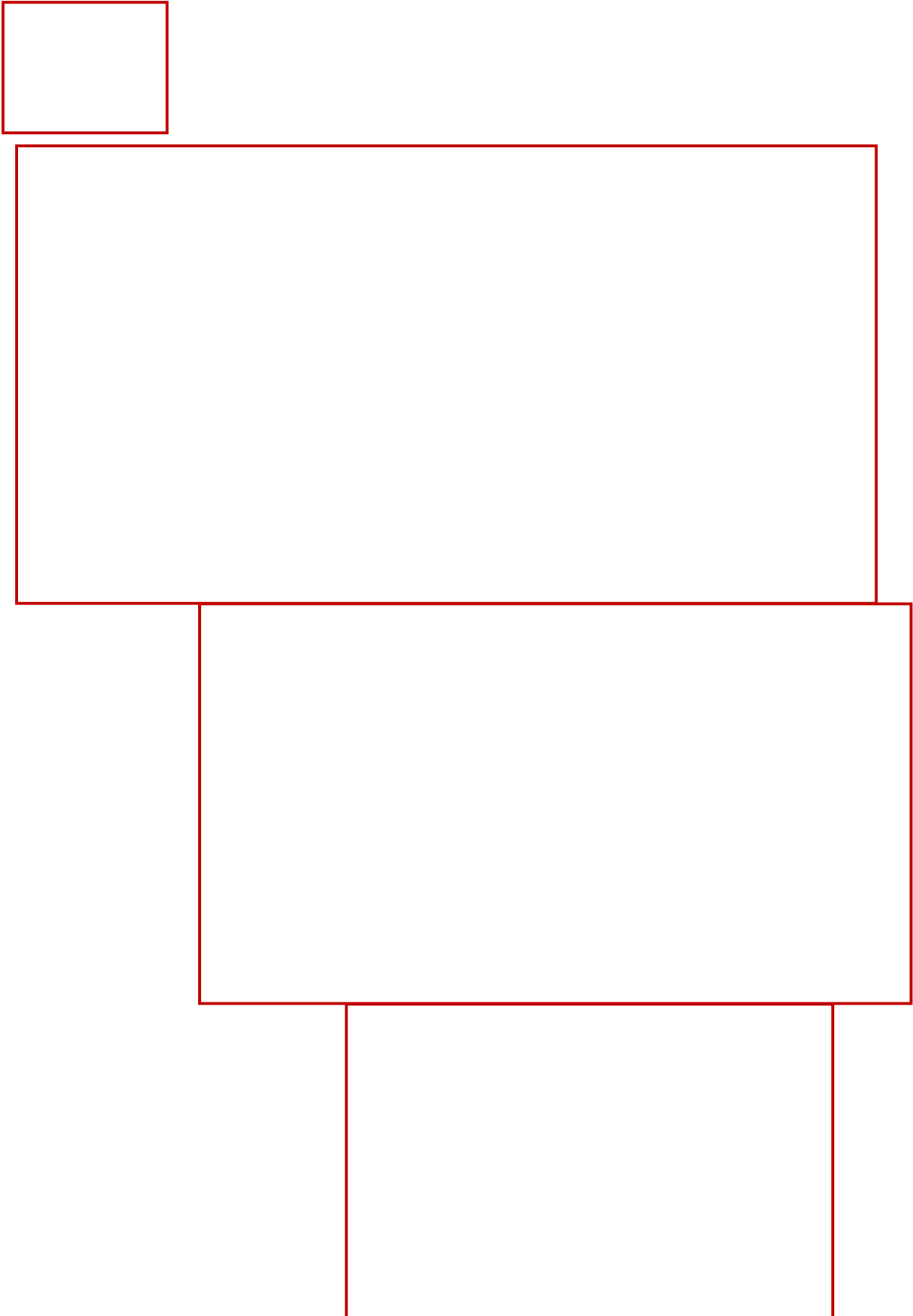
4b_DesulphurisationInformation contains information on desulphurisation of combustion gases from LCPs.

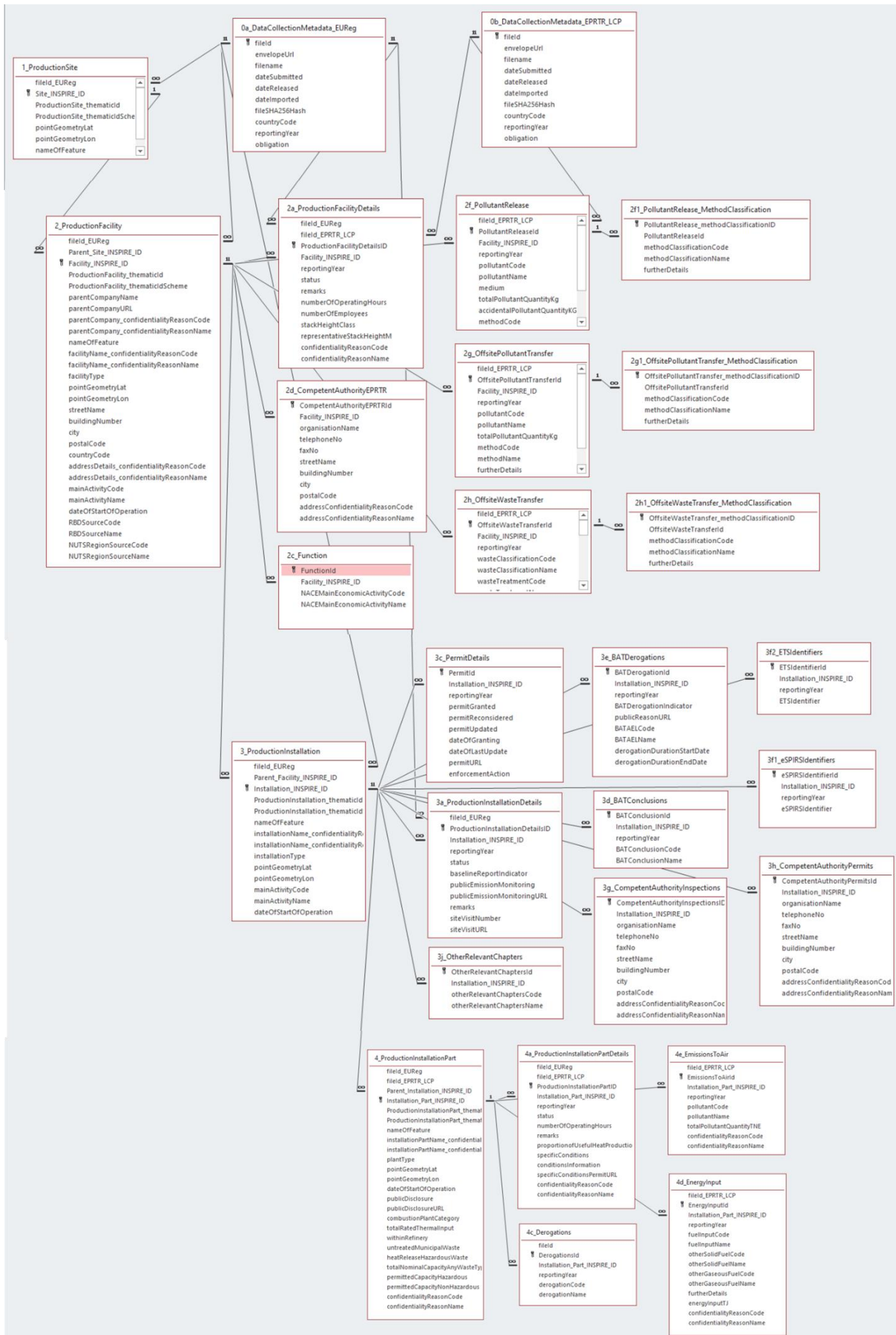
4c_Derogations table contains information on derogations granted to LCPs.

4d_EnergyInput contains information on the fuel consumption of LCPs.

4e_EmissionsToAir table contains information on emissions of pollutants to air from LCPs including the type of pollutant and quantity.

Figure 3: Structure of the EU Industrial Reporting dataset





2.2 Tables and fields

The EPRTR database contains the following tables and fields:

Fields in **0a_DataCollectionMetadata_EU_Reg** and **0b_DataCollectionMetadata_EPRTR_LCP**

Field	Data Type	Description
fileId	Number	Internal ID (primary key).
envelopeUrl	Short text	URL of the submission envelope on the CDR.
Filename	Short text	Name of the submission file.
dateSubmitted	Date/time	Date the submission envelope was released.
dataReleased	Date/time	Date the submission envelope was accepted by the EEA.
dateImported	Date/time	Date the submission was imported into the database.
fileSHA256Hash	Short text	Identifier for internal use.
countryCode	Short text	Country code.
reportingYear	Number	The calendar year of which data was gathered.
obligation	Number	Obligation number.

Fields in **1_ProductionSite**

Field	Data Type	Description
fileId_EUReg	Number	ID linking table to 0a_DataCollectionMetadata .
Site_INSPIRE_ID	Number	Unique identifier of sites (primary key).
ProductionSite_thematicId	Short text	A unique identifier, within each scheme, that may be internal to each reporting country's own national reporting system. Optional field.
ProductionSite_thematicIdScheme	Short text	Description of the scheme or system to which the thematic identifier has relevance. Optional field.
pointGeometryLat	Number	Latitude of the representative point.
pointGeometryLon	Number	Longitude of the representative point.
nameOfFeature	Short text	Name of the site.
countryCode	Short text	Country code.

Fields in **2_ProductionFacility**

Field	Data Type	Description
fileId_EUReg	Number	ID linking table to 0a_DataCollectionMetadata .
Parent_Site_INSPIRE_ID	Short text	Unique identifier of the parent site.
Facility_INSPIRE_ID	Short text	Unique identifier of facilities (primary key).
ProductionFacility_thematicId	Short text	A unique identifier, within each scheme, that may be internal to each reporting country's own national reporting system. Optional field.

ProductionFacility_thematicIdScheme	Short text	Description of the scheme or system to which the thematic identifier has relevance. Optional field.
parentCompanyName	Short text	Parent company name.
parentCompanyURL	Short text	Website URL of the parent company. Optional field.
parentCompany_confidentialityReasonCode	Short text	Confidentiality code for parent company details. Mandatory if confidentiality claimed.
parentCompany_confidentialityReasonName	Long text	Description of reason for confidentiality of parent company details. Mandatory if confidentiality claimed.
nameOfFeature	Short text	Name of facility.
facilityName_confidentialityReasonCode	Short text	Confidentiality code for facility name. Mandatory if confidentiality claimed.
facilityName_confidentialityReasonName	Long text	Description of reason for confidentiality of facility name. Mandatory if confidentiality claimed.
facilityType	Short text	Indication if the facility is subject to the EPRTTR or not.
pointGeometryLat	Number	Latitude of the facility.
pointGeometryLon	Number	Longitude of the facility.
streetName	Short text	Street name of facility.
buildingNumber	Short text	Building name or number of the facility.
city	Short text	City where the facility is located.
postalCode	Short text	Facility postcode.
countryCode	Short text	Country code.
addressDetails_confidentialityReasonCode	Short text	Confidentiality code for facility address details. Mandatory if confidentiality claimed.
addressDetails_confidentialityReasonName	Long text	Description of reason for confidentiality of facility address details. Mandatory if confidentiality claimed.
mainActivityCode	Short text	Facility's main industrial activity code.
mainActivityName	Long text	Facility's main industrial activity name.
dateOfStartOfOperation	Date	Date of start of operation of facility.
RBDSOURCECODE	Short text	Identifies the river basin district code. Field mapped by EEA using facility co-ordinates.
RBDSOURCENAME	Short text	Identifies the river basin district name. Field mapped by EEA using facility co-ordinates.
NUTSRegionSOURCECODE	Short text	NUTS region code. Field mapped by EEA using facility co-ordinates.
NUTSRegionSOURCENAME	Short text	NUTS region name. Field mapped by EEA using facility co-ordinates.

Fields in 2a_ProductionFacilityDetails

Field	Data Type	Description
fileId_EUReg	Number	ID linking table to 0a_DataCollectionMetadata .
fileId_EPRTR_LCP	Number	ID linking table to 0b_DataCollectionMetadata_EPRTR_LCP .
ProductionFacilityDetailsID	Number	Internal ID (primary key).
Facility_INSPIRE_ID	Short text	Unique identifier of facilities.
reportingYear	Number	The calendar year of which data was gathered.
status	Short text	Status of the facility.
remarks	Short text	Textural remark. Optional.
numberOfOperatingHours	Number	The number of operating hours in reporting year. Optional.
numberOfEmployees	Number	The number of employees in reporting years. Optional.
stackHeightClass	Short text	Height class of stack. Optional.
representativeStackHeightM	Number	Stack height in m. Optional.
confidentialityReasonCode	Short text	Confidentiality code for facility information within the ProductionFacilityDetails table. Mandatory if confidentiality claimed.
confidentialityReasonName	Long text	Description of reason for confidentiality of facility details within the ProductionFacilityDetails. Mandatory if confidentiality claimed.

Fields in 2b_EPRTRAnnexIOtherActivity

Field	Data Type	Description
EPRTRAnnexIOtherActivityId	Number	Internal ID (primary key).
Facility_INSPIRE_ID	Short text	Unique identifier of facilities.
reportingYear	Number	The calendar year of which data was gathered.
otherActivityCode	Short text	Additional industrial activity code. Optional.
otherActivityName	Long text	Additional industrial activity name. Optional.

Fields in 2c_Function

Field	Data Type	Description
FunctionId	Number	Internal ID (primary key).
Facility_INSPIRE_ID	Short text	Unique identifier of facilities.
NACEMainEconomicActivityCode	Short text	Economic activity code using the NACE classification system.
NACEMainEconomicActivityName	Long text	Economic activity name using the NACE classification system.

Fields in 2d_CompententAuthorityEPRTR

Field	Data Type	Description
-------	-----------	-------------

CompetentAuthorityEPTRId	Number	Internal ID (primary key).
Facility_INSPIRE_ID	Short text	Unique identifier of facilities.
organisationName	Short text	Competent authority name.
telephoneNo	Short text	Competent authority telephone number.
faxNo	Short text	Competent authority fax number. Optional.
streetName	Short text	Competent authority street name.
buildingNumber	Short text	Competent authority building number.
city	Short text	City the competent authority is located in.
postalCode	Short text	Post code of the competent authority.
addressConfidentialityReasonCode	Short text	Reason code for confidentiality of competent authority information. Mandatory if confidentiality claimed.
addressConfidentialityReasonName	Long text	Reason for confidentiality of competent authority information. Mandatory if confidentiality claimed.

Fields in 2e_ProductionVolume

Field	Data Type	Description
fileId_EPTR_LCP	Number	ID linking table to 0b_DataCollectionMetadata_EPTR_LCP .
ProductionVolumeTypeId	Number	Internal ID (primary key).
Facility_INSPIRE_ID	Short text	Unique identifier of facilities.
reportingYear	Number	The calendar year of which data was gathered.
productName	Long text	Name of product produced. Optional.
productionVolume	Number	Production volume. Optional.
productionVolumeUnits	Short text	Unit of production volume reported. Optional.

Fields in 2f_ProductionRelease and 2f1_ProductionRelease_MethodClassification

Field	Data Type	Description
fileId_EPTR_LCP	Number	ID linking table to 0b_DataCollectionMetadata_EPTR_LCP .
PollutantReleaseId	Short text	Internal ID (primary key).
Facility_INSPIRE_ID	Short text	Unique identifier of facilities.
reportingYear	Number	The calendar year of which data was gathered.
pollutantCode	Short text	Pollutant code of the release.
pollutantName	Short text	Pollutant name of the release.
medium	Short text	Medium to which the pollutant is released.
totalPollutantQuantityKg	Number	Total quantity in kg released in the reporting year into the same medium for the pollutant referred to in the pollutant attribute.

accidentalPollutantQuantityKG	Number	Total quantity in kg released accidentally in the reporting year into the same medium for the pollutant referred to in the pollutant attribute.
methodCode	Short text	Method code that classifies the release in terms of whether the quantity was estimated, calculated or measured.
methodName	Short text	Method name that classifies the release in terms of whether the quantity was estimated, calculated or measured.
furtherDetails	Short text	Further detail regarding the method.
confidentialityReasonCode	Short text	Reason code for confidentiality of pollutant release information. Mandatory if confidentiality claimed.
confidentialityReasonName	Long text	Reason for confidentiality of pollutant release information. Mandatory if confidentiality claimed.
PollutantRelease_methodClassificationID	Number	Internal ID (primary key).
PollutantReleaseId	Number	Internal ID. Links to 2f_ProductionRelease .
methodClassificationCode	Short text	Additional method classification code. Mandatory for measured and calculated emissions.
methodClassificationName	Short text	Additional method classification name. Mandatory for measured and calculated emissions.
furtherDetails	Short text	Additional details of measurement or calculation method where an Other method classification is reported.

Fields in **2g_OffsiteProductionTransfer** and **2f1_OffsiteProductionTransfer_MethodClassification**

Field	Data Type	Description
fileId_EPRTR_LCP	Number	ID linking table to 0b_DataCollectionMetadata_EPRTR_LCP .
PollutantReleaseId	Short text	Internal ID (primary key).
Facility_INSPIRE_ID	Short text	Unique identifier of facilities.
reportingYear	Number	The calendar year of which data was gathered.
pollutantCode	Short text	Pollutant code of the transfer.
pollutantName	Short text	Pollutant name of the transfer.
totalPollutantQuantityKg	Number	Total quantity in kg transferred in the reporting year for the pollutant referred to in the pollutant attribute.
methodCode	Short text	Method code that classifies the transfer in terms of whether the quantity was estimated, calculated or measured.

methodName	Short text	Method name that classifies the transfer in terms of whether the quantity was estimated, calculated or measured.
furtherDetails	Short text	Further detail regarding the method.
confidentialityReasonCode	Short text	Reason code for confidentiality of pollutant transfer information. Mandatory if confidentiality claimed.
confidentialityReasonName	Long text	Reason for confidentiality of pollutant transfer information. Mandatory if confidentiality claimed.
OffsitePollutantTransfer_methodClassificationID	Number	Internal ID (primary key).
OffsitePollutantTransferId	Number	Internal ID. Links to 2g_OffsiteProductionTransfer .
methodClassificationCode	Short text	Additional method classification code. Mandatory for measured and calculated emissions.
methodClassificationName	Short text	Additional method classification name. Mandatory for measured and calculated emissions.
furtherDetails	Short text	Additional details of measurement or calculation method where another method classification is reported.

Fields in **2h_OffsiteWasteTransfer** and **2h1_OffsiteWasteTransfer_MethodClassification**

Field	Data Type	Description
field_EPRTR_LCP	Number	ID linking table to 0b_DataCollectionMetadata_EPRTR_LCP .
OffsiteWasteTransferId	Short text	Internal ID (primary key).
Facility_INSPIRE_ID	Short text	Unique identifier of facilities.
reportingYear	Number	The calendar year of which data was gathered.
wasteClassificationCode	Short text	Code classifying the transfer according to the whether it is hazardous or non-hazardous in nature.
wasteClassificationName	Short text	Name classifying the transfer according to the whether it is hazardous or non-hazardous in nature.
wasteTreatmentCode	Short text	Code classifying the transfer in terms of its intended destination type; recovery or disposal.
wasteTreatmentName	Short text	Name classifying the transfer in terms of its intended destination type; recovery or disposal.
totalWasteQuantityTNE	Number	The quantity of the waste transfer in metric tonnes.

methodCode	Short text	Method code that classifies the transfer in terms of whether the quantity was estimated, calculated or measured.
methodName	Short text	Method name that classifies the transfer in terms of whether the quantity was estimated, calculated or measured.
furtherDetails	Short text	Further detail regarding the method.
confidentialityReasonCode	Short text	Reason code for confidentiality of waste transfer information. Mandatory if confidentiality claimed.
confidentialityReasonName	Short text	Reason for confidentiality of waste transfer information. Mandatory if confidentiality claimed.
transboundaryIndicator	Yes/No	Indicator as to whether the waste transfer is to another country.
nameOfReceiver	Short text	Name of the waste receiver. Mandatory for transboundary transfers.
Receiver_streetName	Short text	Street name of the waste receiver. Mandatory for transboundary transfers.
Receiver_buildingNumber	Short text	Building number of the waste receiver. Mandatory for transboundary transfers.
Receiver_city	Short text	City waste receiver is located in. Mandatory for transboundary transfers.
Receiver_postalCode	Short text	Post code of the waste receiver. Mandatory for transboundary transfers.
Receiver_countryName	Short text	Country name waste receiver is located in. Mandatory for transboundary transfers.
Receiver_countryCode	Short text	Country code waste receiver is located in. Mandatory for transboundary transfers.
ReceivingSite_streetName	Short text	Street name of the site physically receiving the waste. Mandatory for transboundary transfers.
ReceivingSite_buildingNumber	Short text	Building number of the site physically receiving the waste. Mandatory for transboundary transfers.
ReceivingSite_city	Short text	City the site physically receiving the waste is located in. Mandatory for transboundary transfers.
ReceivingSite_postalCode	Short text	Post code of the site physically receiving the waste. Mandatory for transboundary transfers.

ReceivingSite_countryCode	Short text	Country code the site physically receiving the waste is located in. Mandatory for transboundary transfers.
ReceivingSite_countryName	Short text	Country name the site physically receiving the waste is located in. Mandatory for transboundary transfers.
PollutantRelease_methodClassificationID	Number	Internal ID (primary key).
PollutantReleaseId	Number	Internal ID. Links to 2h1_OffsiteWasteTransfer_MethodClassification .
methodClassificationCode	Short text	Additional method classification code. Mandatory for measured and calculated emissions.
methodClassificationName	Short text	Additional method classification name. Mandatory for measured and calculated emissions.
furtherDetails	Short text	Additional details of measurement or calculation method where an Other method classification is reported.

Fields in **3_ProductionInstallation**

Field	Data Type	Description
fileId_EUReg	Number	ID linking table to 0a_DataCollectionMetadata .
Parent_Facility_INSPIRE_ID	Short text	Unique identifier of the parent facility.
Installation_INSPIRE_ID	Short text	Unique identifier of installations (primary key).
ProductionInstallation_thematicId	Short text	A unique identifier, within each scheme, that may be internal to each reporting country's own national reporting system. Optional field.
ProductionInstallation_thematicIdScheme	Short text	Description of the scheme or system to which the thematic identifier has relevance. Optional field.
nameOfFeature	Short text	Name of installation.
installationName_confidentialityReasonCode	Short text	Confidentiality code for installation name. Mandatory if confidentiality claimed.
installationName_confidentialityReasonName	Long text	Description of reason for confidentiality of installation name. Mandatory if confidentiality claimed.
installationType	Short text	Indication if the installation is subject to the IED or not.
pointGeometryLat	Number	Latitude of the installation.
pointGeometryLon	Number	Longitude of the installation.
mainActivityCode	Short text	Installation's main industrial activity code.

mainActivityName	Long text	Installation's main industrial activity name.
dateOfStartOfOperation	Date	Date of start of operation of installation.

Fields in 3a_ProductionInstallationDetails

Field	Data Type	Description
fileId_EUReg	Number	ID linking table to 0a_DataCollectionMetadata .
ProductionInstallationDetailsID	Number	Internal ID (primary key).
Installation_INSPIRE_ID	Short text	Unique identifier of installations.
reportingYear	Short text	The calendar year of which data was gathered.
status	Short text	Status of the installation (functional, decommissioned etc.).
nameOfFeature	Short text	Name of installation.
baselineReportIndicator	Short text	Indication as to whether a baseline report was produced.
publicEmissionMonitoring	Long text	Information on how public could obtain information on emission monitoring at the installation. Optional in 2017 reporting year.
publicEmissionMonitoringURL	Short text	URL of the website where information on emission monitoring at the installation can be found. Optional in 2017 reporting year.
remarks	Long text	Additional relevant information.
siteVisitNumber	Number	Number of times installation was inspected in the calendar year.
siteVisitURL	Short text	URL of website where information on-site inspections for the installation can be found. Optional in 2017 reporting year.

Fields in 3b_IEDAnnexIOtherActivity

Field	Data Type	Description
IEDAnnexIActivityId	Number	Internal ID (primary key).
Installation_INSPIRE_ID	Short text	Unique identifier of installations.
reportingYear	Number	The calendar year of which data was gathered.
otherActivityCode	Short text	Additional industrial activity code. Optional.
otherActivityName	Long text	Additional industrial activity name. Optional.

Fields in 3c_PermitDetails

Field	Data Type	Description
PermitId	Number	Internal ID (primary key).
Installation_INSPIRE_ID	Short text	Unique identifier of installations.

reportingYear	Number	The calendar year of which data was gathered.
permitGranted	Yes/No	Indication of whether a permit fulfilling the requirements of the IED has been issued to the installation.
permitReconsidered	Yes/No	Indication if the permit was reconsidered in the reporting year.
permitUpdated	Yes/No	Indication if the permit was updated in the reporting year.
dateOfGranting	Date	Date the IED compliant permit was granted.
dateOfLastUpdate	Date	Date of permit update if updated in reporting year.
permitURL	Long text	URL of website where permitting information for the installation can be found.
enforcementAction	Long text	Information provided on the enforcement action taken against installations without an IED compliant permit.

Fields in 3d_BATConclusions

Field	Data Type	Description
BATConclusionId	Number	Internal ID (primary key).
Installation_INSPIRE_ID	Short text	Unique identifier of installations.
reportingYear	Number	The calendar year of which data was gathered.
BATConclusionCode	Short text	BAT conclusion code applicable to the installation. Optional 2017 reporting year.
BATConclusionName	Short text	BAT conclusion name applicable to the installation. Optional 2017 reporting year.

Fields in 3e_BATDerogations

Field	Data Type	Description
BATConclusionId	Number	Internal ID (primary key).
Installation_INSPIRE_ID	Short text	Unique identifier of installations.
reportingYear	Number	The calendar year of which data was gathered.
BATDerogationIndicator	Yes/No	Indication if an installation has been granted derogations to emission limits set under the IED.
publicReasonURL	Short text	URL of website where information on reasons behind the granting of derogations is provided.
BATAELCode	Short text	Code of the BAT AEL from which the derogation has been granted.
BATAELName	Short text	Name of the BAT AEL from which the derogation has been granted.

derogationDurationStartDate	Date	Start date of derogation.
derogationDurationEndDate	Date	End date of derogation. Optional.

Fields in 3f1_eSPIRSIdentifiers

Field	Data Type	Description
eSPIRSIdentifierId	Number	Internal ID (primary key).
Installation_INSPIRE_ID	Short text	Unique identifier of installations.
reportingYear	Number	The calendar year of which data was gathered.
eSPIRSIdentifier	Short text	Establishment Code for the parent establishment under which the installation is attributed as reported under the Seveso Plant Information Retrieval. Optional.

Fields in 3f2_ETSIdentifiers

Field	Data Type	Description
ETSIdentifierId	Number	Internal ID (primary key).
Installation_INSPIRE_ID	Short text	Unique identifier of installations.
reportingYear	Number	The calendar year of which data was gathered.
ETSIdentifier	Short text	Unique ID for each installation as found in the EU Emissions Trading System database.

Fields in 3g_CompententAuthorityInspections

Field	Data Type	Description
CompententAuthorityInspectionsID	Number	Internal ID (primary key).
Installation_INSPIRE_ID	Short text	Unique identifier of installations.
organisationName	Short text	Name of competent authority organisation inspecting installations.
faxNo	Short text	Fax number of competent authority inspecting installations. Optional.
streetName	Short text	Street name of competent authority inspecting installations.
buildingNumber	Short text	Building number of competent authority inspecting installations.
city	Short text	City competent authority inspecting installations is located in.
postalCode	Short text	Post code of competent authority inspecting installations.
addressConfidentialityReasonCode	Short text	Reason code for confidentiality of competent authority information. Mandatory if confidentiality claimed.
addressConfidentialityReasonName	Long text	Reason for confidentiality of competent authority information. Mandatory if confidentiality claimed.

Fields in 3h_CompententAuthorityPermits

Field	Data Type	Description
-------	-----------	-------------

CompetentAuthorityPermitsId	Number	Internal ID (primary key).
Installation_INSPIRE_ID	Short text	Unique identifier of installations.
organisationName	Short text	Name of competent authority organisation permitting installations.
faxNo	Short text	Fax number of competent authority permitting installations. Optional
streetName	Short text	Street name of competent authority permitting installations.
buildingNumber	Short text	Building number of competent authority permitting installations.
city	Short text	City competent authority permitting installations is located in.
postalCode	Short text	Post code of competent authority permitting installations.
addressConfidentialityReasonCode	Short text	Reason code for confidentiality of competent authority information. Mandatory if confidentiality claimed..
addressConfidentialityReasonName	Long text	Reason for confidentiality of competent authority information. Mandatory if confidentiality claimed.

Fields in 3i_StricterPermitConditions

Field	Data Type	Description
StricterPermitConditionsID	Number	Internal ID (primary key).
Installation_INSPIRE_ID	Short text	Unique identifier of installations.
reportingYear	Number	The calendar year of which data was gathered.
stricterPermitConditionsIndicator	Yes/No	Indication if an installation's emission limits are stricter than the emission limits set under the IED.
BATAELCode	Short text	Code of the BAT AEL from which the stricter condition has been enforced.
BATAELName	Short text	Name of the BAT AEL from which the stricter condition has been enforced.
Article14(4)	Yes/No	Indication if the stricter permitting condition is applicable to Article 14(4).
Article18	Yes/No	Indication if the stricter permitting condition is applicable to Article 18.

Fields in 3j_OtherRelevantChapters

Field	Data Type	Description
OtherRelevantChaptersId	Number	Internal ID (primary key).
Installation_INSPIRE_ID	Short text	Unique identifier of installations.
otherRelevantChaptersCode	Short text	Code of chapters of the IED relevant to the installation, excluding I & II. Optional.
otherRelevantChaptersName	Short text	Name of chapters of the IED relevant to the installation, excluding I & II. Optional.

Fields in 4_ProductionInstallationPart

Field	Data Type	Description
fileId_EUReg	Number	ID linking table to 0a_DataCollectionMetadata .
fileId_EPRTR_LCP	Number	ID linking table to 0b_DataCollectionMetadata_EPRTR_LCP .
Parent_Installation_INSPIRE_ID	Short text	Unique identifier of the parent installation.
Installation_Part_INSPIRE_ID	Short text	Unique identifier of parts (primary key).
ProductionInstallationPart_thematicId	Short text	A unique identifier, within each scheme, that may be internal to each reporting country's own national reporting system. Optional field.
ProductionInstallationPart_thematicIdScheme	Short text	Description of the scheme or system to which the thematic identifier has relevance. Optional field.
nameOfFeature	Short text	Name of part.
installationPartName_confidentialityReasonCode	Short text	Confidentiality code for part name. Mandatory if confidentiality claimed.
installationPartName_confidentialityReasonName	Long text	Description of reason for confidentiality of part name. Mandatory if confidentiality claimed.
plantType	Short text	Indication if the part is an LCP, WI or co-WI.
pointGeometryLat	Number	Latitude of the part.
pointGeometryLon	Number	Longitude of the part.
dateOfStartOfOperation	Date	Date of start of operation of part.
publicDisclosure	Long text	Information on how information referred to in Article 55(2) of the IED is made publicly available. Relevant to WI and co-WIs only.
publicDisclosureURL	Short text	URL of website where information referred to in Article 55(2) of the IED is made publicly available. Relevant to WI and co-WIs only.
combustionPlantCategory	Short text	Information on the type of combustion plant. Relevant LCPs only.
totalRatedThermalInput	Number	Thermal input of the LCP expressed in megawatts thermal (MWTh). Relevant LCPs only.
withinRefinery	Number	Indication of if the LCP is located within a refinery. Relevant LCPs only.
untreatedMunicipalWaste	Yes/No	Indication if untreated municipal waste is incinerated. Relevant to WI and co-WIs only.
heatReleaseHazardousWaste	Yes/No	Indication if more than 40% of the heat release is from hazardous waste. Relevant to WI and co-WIs only.

totalNominalCapacityAnyWasteType	Number	Total nominal capacity (waste). Relevant to WI and co-WIs only.
permittedCapacityHazardous	Number	Maximum permitted capacity for hazardous waste. Relevant to WI and co-WIs only.
permittedCapacityNonHazardous	Number	Maximum permitted capacity for non-hazardous waste. Relevant to WI and co-WIs only.
confidentialityReasonCode	Short text	Reason code for confidentiality of part information. Mandatory if confidentiality claimed.
confidentialityReasonName	Long text	Reason name for confidentiality of part information. Mandatory if confidentiality claimed.

Fields in **4a_ProductionInstallationPartDetails**

Field	Data Type	Description
fileId_EUReg	Number	ID linking table to 0a_DataCollectionMetadata .
fileId_EPRTTR_LCP	Number	ID linking table to 0b_DataCollectionMetadata_EPRTTR_LCP .
ProductionInstallationPartID	Short text	Internal ID (primary key).
Installation_Part_INSPIRE_ID	Short text	Unique identifier of parts.
reportingYear	Number	The calendar year of which data was gathered.
status	Short text	Status of the part (functional, decommissioned etc.).
numberOfOperatingHours	Number	Hours of operation with the reporting year. Relevant to LCPs only.
remarks	Long text	Additional information provided for parts.
proportionofUsefulHeatProductionForDistrict Heating	Number	Fraction of useful heat production of each plant which was delivered in the form of steam or hot water to a public network for district heating, expressed as a rolling average over the preceding 5 years. Relevant to LCPs only.
specificConditions	Short text	Indication if permit allows for a derogation from the requirements of Article 50 of the IED. Relevant to WI and co-WIs only.
conditionsInformation	Long text	Further information on the nature of the authorised change to the operating conditions. Relevant to WI and co-WIs only.
specificConditionsPermitURL	Long text	URL for the permit which sets out the operating conditions. Relevant to WI and co-WIs only.

confidentialityReasonCode	Short text	Reason code for confidentiality of part information. Mandatory if confidentiality claimed.
confidentialityReasonName	Short text	Reason name for confidentiality of part information. Mandatory if confidentiality claimed.

Fields in **4b_DesulphurisationInformation** (LCPs only)

Field	Data Type	Description
fileId_EPRTTR_LCP	Number	ID linking table to 0b_DataCollectionMetadata_EPRTTR_LCP .
DesulphurisationInformationId	Short text	Internal ID (primary key).
Installation_Part_INSPIRE_ID	Short text	Unique identifier of parts.
reportingYear	Number	The calendar year of which data was gathered.
month	Short text	Month.
desulphurisationRate	Number	The rate of desulphurisation achieved as a fraction.
sulphurContent	Number	Sulphur content of the indigenous solid fuel, as a fraction.
technicalJustification	Long text	The technical justification of the non-feasibility of complying with the emission limit values referred to in Article 30(2) and (3) of the IED

Fields in **4c_Derogations** (LCPs only)

Field	Data Type	Description
fileId	Number	ID linking table to 0a_DataCollectionMetadata .
DerogationsId	Short text	Internal ID (primary key).
Installation_Part_INSPIRE_ID	Short text	Unique identifier of parts.
reportingYear	Number	The calendar year of which data was gathered.
derogationCode	Short text	Code of derogations against the IED granted for LCPs
derogationName	Short text	Name of derogations against the IED granted for LCPs.

Fields in **4d_EnergyInput** (LCPs only)

Field	Data Type	Description
fileId_EPRTTR_LCP	Number	ID linking table to 0a_DataCollectionMetadata .
EnergyInputId	Short text	Internal ID (primary key).
Installation_Part_INSPIRE_ID	Short text	Unique identifier of parts.
reportingYear	Number	The calendar year of which data was gathered.
fuelInputCode	Short text	Fuel code.
fuelInputName	Long text	Fuel name.

otherSolidFuelCode	Short text	Other solid fuel code. Only applicable if fuelInput reported is "OtherSolidFuels".
otherSolidFuelName	Short text	Other solid fuel name. Only applicable if fuelInput reported is "OtherSolidFuels".
otherGaseousFuelCode	Short text	Other gaseous fuel code. Only applicable if fuelInput reported is "OtherGases".
otherGaseousFuelCode	Short text	Other gaseous fuel name. Only applicable if fuelInput reported is "OtherGases".
furtherDetails	Short text	Further information pertaining to the fuel categories chosen.
energyInputTJ	Number	Energy input reported by fuel type in the reporting year in TJ.
confidentialityReasonCode	Short text	Reason code for confidentiality of fuel information. Mandatory if confidentiality claimed.
confidentialityReasonName	Long text	Reason name for confidentiality of fuel information. Mandatory if confidentiality claimed.

Fields in **4e_EmissionsToAir** (LCPs only)

Field	Data Type	Description
fileId_EPRTR_LCP	Number	ID linking table to 0a_DataCollectionMetadata .
EmissionsToAirId	Short text	Internal ID (primary key).
Installation_Part_INSPIRE_ID	Short text	Unique identifier of parts.
reportingYear	Number	The calendar year of which data was gathered.
pollutantCode	Short text	Pollutant code.
pollutantCode	Long text	Pollutant name.
totalPollutantQuantityTNE	Short text	Quantity of pollutant emitted in the reporting year in metric tonnes.
confidentialityReasonCode	Short text	Reason code for confidentiality of emissions information. Mandatory if confidentiality claimed.
confidentialityReasonName	Short text	Reason name for confidentiality of emissions information. Mandatory if confidentiality claimed.

2.3 Queries

The database also contains some queries to read and set in context the most important data from multiple tables. These are presented in the table below.

Query Name	Information included
E-PRTR facilities	Combines information from the 2_ProductionFacility and 2a_FacilityDetails tables. Contains information on the facility location, activity and status for "E-PRTR" facilities only.
E-PRTR Facilities - Pollutant Releases	Combines information from the 2_ProductionFacility and 2f_PollutantRelease tables. Contains information on pollutant releases and some facility details such as name and activity.
E-PRTR Facilities - Pollutant Transfers	Combines information from the 2_ProductionFacility and 2g_OffsitePollutantTransfer tables. Contains information on pollutant transfers and some facility details such as name and activity by year
E-PRTR Facilities – Waste Transfers	Combines information from the 2_ProductionFacility and 2g_OffsiteWasteTransfer tables. Contains information on waste transfers and some facility details such as name and activity by year.
IED installations	Combines information from the 3_ProductionInstallation , 3a_ProductionInstallationsDetails and 3c_PermitDetails tables. Contains information on installation location, activity, status and permits.
Large Combustion Plants	Combines information from the 4_ProductionInstallationPart and 4a_ProductionInstallationPartsDetails tables. Contains information on location, status, thermal input and operating hours of LCPs by year.
LCPs - Emissions to Air	Combines information from the 4_ProductionInstallationPart , 4a_ProductionInstallationPartsDetails and 4e_EmissionsToAir tables. Contains information on emissions and combustion unit type for LCPs by year.
LCPs – Energy Input	Combines information from the 4_ProductionInstallationPart , 4a_ProductionInstallationPartsDetails and 4e_EnergyInput tables. Contains information on quantities of fuel consumed by year.
Waste incinerators and co-Waste incinerators	Combines information from the 4_ProductionInstallationPart and 4a_ProductionInstallationPartsDetails tables. Contains information on location, permitted waste capacities and information on where environmental monitoring data is made publicly available.

2.4 User-friendly tables in Excel

These files offer an extract from the MS Access database in both text and Excel format. file is presented in two versions:

- **Sixteen (16) .csv** files which contain data as a flat table, suitable for an expert user who wants to explore data without having MS Access and
- **Sixteen (16) .xlsx** files where data is presented in an user-friendly way in order to facilitate data exploration.

The content of each .csv and .xlsx file is described below.

F1_1_Total Releases at National Level into Air contains the total air releases aggregated at national level for all the reported pollutants in E-PRTR from 2007 onwards¹.

F1_2_Total Releases at E-PRTR Sector Level into Air contains the total air releases aggregated at national level and E-PRTR sector² for all the reported pollutants from 2007 onwards.

F1_3_Total Releases at E-PRTR Annex I activity into Air contains the total air releases aggregated at national level and E-PRTR Annex I level of detail for all the reported pollutants from 2007 onwards.

F1_4_Total Releases at facility level with E-PRTR Sector and Activity detail into Air contains the air releases for each reported pollutant at facility level with information on the E-PRTR Annex I activity, and relevant E-PRTR sector, from 2007 (or from the first year the facility has been reported) onwards.

F2_1_Total Releases at National Level into Water contains the total water releases aggregated at national level for all the reported pollutants in E-PRTR from 2007 onwards.

F2_2_Total Releases at E-PRTR Sector Level into Water contains the total water releases aggregated at national level and E-PRTR sector for all the reported pollutants from 2007 onwards.

F2_3_Total Releases at E-PRTR Annex I activity into Water contains the total water releases aggregated at national level and E-PRTR Annex I level of detail for all the reported pollutants from 2007 onwards.

F2_4_Total Releases at facility level with E-PRTR Sector and Annex I Activity detail into Water contains the water releases for each reported pollutant at facility level with information on the E-PRTR Annex I activity, and relevant E-PRTR sector, from 2007 (or from the first year the facility has been reported).

F3_1_Total Pollutant Transfers at National Level contains the total pollutant transfers reported to E-PRTR aggregated at national level for all the reported pollutants from 2007 onwards.

F3_2_Detailed WasteTransfer at facility level with E-PRTR Sector and Annex I Activity detail contains the pollutant transfer for each reported pollutant at facility level with information on the E-PRTR Annex I activity, and relevant E-PRTR sector, from 2007 (or from the first year the facility has been reported).

F4_1_Total Waste Transfers at National Level contains the total waste transfers reported to E-PRTR aggregated at national level for all the reported waste categories from 2007 onwards.

¹ See About the database section

² EPRTR Sector Name is taken from the document "Mapping of nomenclatures relevant to emission reporting"
https://cdr.eionet.europa.eu/help/nomenclature_emission

F4_2_Detailed Waste Transfer at facility level with E-PRTR Sector and Annex I Activity detail contains the waste transfer for each reported waste categories at facility level with information on the E-PRTR Annex I activity, and relevant E-PRTR sector, from 2007 (or from the first year the facility has been reported) onwards.

F5_1_Total emissions and energy input from LCP at national level contains the total emissions and the total energy input of LCPs at national level for all the reported pollutants and fuel types from 2016 onwards.

F5_2_Detailed emissions and energy input from LCP contains information about emissions energy input and technical characteristics (total rated thermal input and operating hours) of each reported LCP from 2016 (or from the first year the LCP has been reported) onwards. Information regarding energy input, emission and technical characteristic are presented as 'feature type' to provide a complete overview of all the characteristic of a given plant.

F6_1_Detailed information on Installation (IED) contains all the information reported for a given installation according to the definition of IED. For each installation information about the IED Annex I activity, date of permit granting, Boolean information about granting, updating and reconsidering a permit, the date of the last update of a permit, and the relevant chapter are included. In addition a 'featureType' field is provided which includes BATAEL, BATConclusion and BATDerogation. Relevant information regarding these fields is included, when reported, in the 'featureValue' field. Due to this, each installation has information reported in multiple rows for each year from 2017 onwards.

F7_1_Detailed information on WI and co-WI contains all the information related to the reported waste incinerators (WI) and co-waste incinerators (co-WI) such as, the total nominal capacity, the permitted capacity for both hazardous and non-hazardous waste, the untreated municipal waste, information regarding the public disclosure and specific condition on the permit. Information about the parent Installation is provided too. Information is provided from 2017 onwards.

The **.xlsx files have the same content as the above described .csv ones displayed by year** (except from F6_1_Detailed information on Installation (IED) and F7_1_Detailed information on WI and co-WI where the structure is the same as in the .csv). This allows the user to visualize temporal information regarding releases (air or water), emissions, pollutant or waste transfer, energy input in an immediate way.

An example from **F1_1_Total Releases at National Level into Air** is provided below.

countryName	pollutant	2007	2008	2009	2010	2011	2012	2013	2014	2015	2016	2017	2018	2019
Austria	Ammonia (NH3)	235400	282900	231700	194600	210200	169800	147100	161800	321500	156300	133300	237900	238600
Austria	Benzene	6050	7880	9070	3800	4240	4240	4010	3910	3820	3760		4660	

Suggestion on how to explore the .csv and .xlsx files

All the files (both **.csv** and **.xlsx**) which contain detailed information (F1_4, F2_4, F3_2, F4_2, F5_2, F6_1 and F7_1) include the information regarding the name of the geographical hierarchy level, i.e: facility name, installation name and installationPart name.

The user should take into consideration that the name of a given entity might change across the time, for example due to a change in the parent company's name or a merger. Therefore we recommend to follow these steps in order to visualize data.

- Use the filter on "facilityName" or "installationName" or "installationPartName",
- Take note of the relevant InspireID and remove the filter on the name,
- Apply the filter on the InspireID

Confidentiality in the user-friendly files

The files F1_4, F2_4, F3_2, F4_2 and F5_2 do not include any geographical entities which has reported the confidentiality clause.

2.5 Metadata

- Reporting obligation:
 - *EU Registry on Industrial Sites* - <https://rod.eionet.europa.eu/obligations/721>
 - *E-PRTR and LCP Integrated Reporting* - <https://rod.eionet.europa.eu/obligations/720>

Temporal coverage:

- 2007-2020 for EPRTR facilities,
- 2017-2020 for IED installations and WI/co-WIs,
- 2016 -2020 for LCPs.

Geographic coverage: Austria, Belgium, Bulgaria, Croatia, Cyprus, Czechia, Denmark, Estonia, Finland, France, Germany, Greece, Hungary, Iceland, Ireland, Italy, Latvia, Liechtenstein, Lithuania, Luxembourg, Malta, Netherlands, Poland, Portugal, Romania, Serbia, Slovenia, Spain, Sweden, Switzerland, United Kingdom.

Note: This product includes data reported by United Kingdom while they were still part of the European Union. As result of the Brexit withdrawal agreement, as of reporting year 2020, information regarding Industrial Sites, Facilities and Large Combustion Plant from Northern Ireland only will be included only for the EU Registry data.

Units:

- Pollutant releases and transfers (kg/year).
- Waste transfers (t/year).
- Total energy input, related to net calorific value (TJ/year).
- SO₂, NO_x and dust emissions from LCPs (t/year).
- Rated thermal input (MWth).
- Nominal and permitted capacities of Waste Incinerator and Co-Waste Incinerator (t/h)