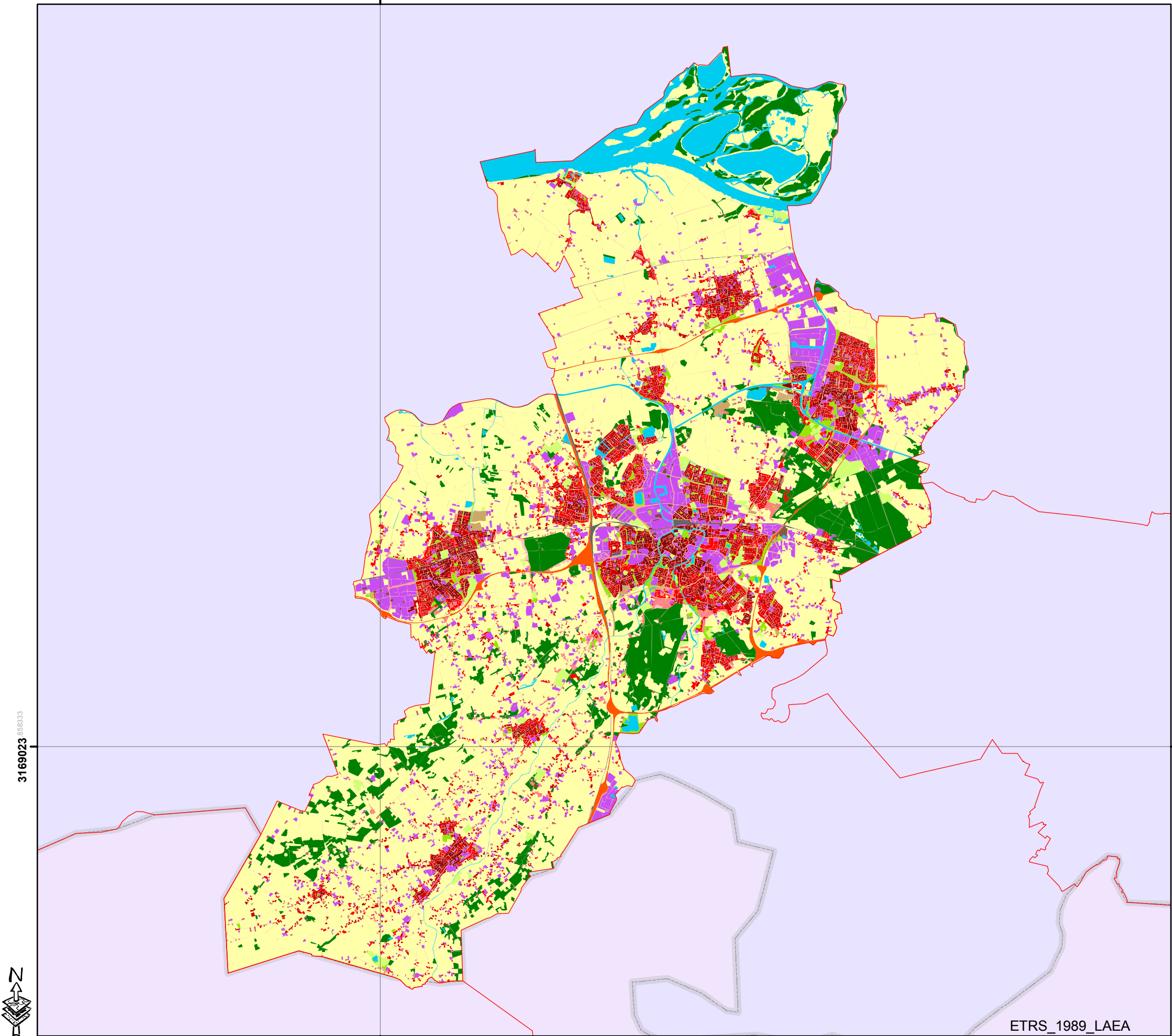
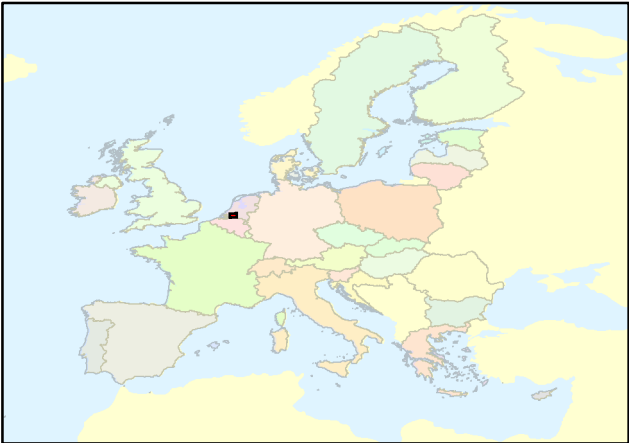


URBAN ATLAS - NL012L-Breda

3947347 963889



Legend

11100: Continuous Urban fabric (S.L. > 80%)

11210: Discontinuous Dense Urban Fabric (S.L.: 50% - 80%)

11220: Discontinuous Medium Density Urban Fabric (S.L.: 30% - 50%)

11230: Discontinuous Low Density Urban Fabric (S.L.: 10% - 30%)

11240: Discontinuous very low density urban fabric (S.L. < 10%)

11300: Isolated Structures

12100: Industrial, commercial, public, military and private units

12210: Fast transit roads and associated land

12220: Other roads and associated land

12230: Railways and associated land

12300: Port areas

12400: Airports

13100: Mineral extraction and dump sites

13300: Construction sites

13400: Land without current use

14100: Green urban areas

14200: Sports and leisure facilities

20000: Agricultural, semi-natural and wetland areas

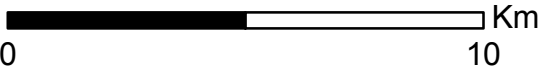
30000: Forest

50000: Water

févr 12, 2010



ETRS_1989_LAEA



3947347 963889