

Noise in Europe

2015 overview of policy-related data



Austria 

April 2016



The Environmental Noise Directive (END) requires EU Member States to assess exposure to noise from key transport and industrial sources with two initial reporting phases: 2007 and 2012. Where the recommended thresholds for day and night indicators are exceeded, action plans are to be implemented. This country fact sheet presents key statistics related to END assessments as reported to EEA by 30th June 2015 for the two key END indicators: L_{den} (day evening and night exposure) and L_{night} (night time exposure). Where possible this is presented for second round assessments reported in 2012. Trends are presented as the change in exposure from 2007 to 2012, for comparable sources only.


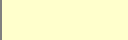



AUSTRIA

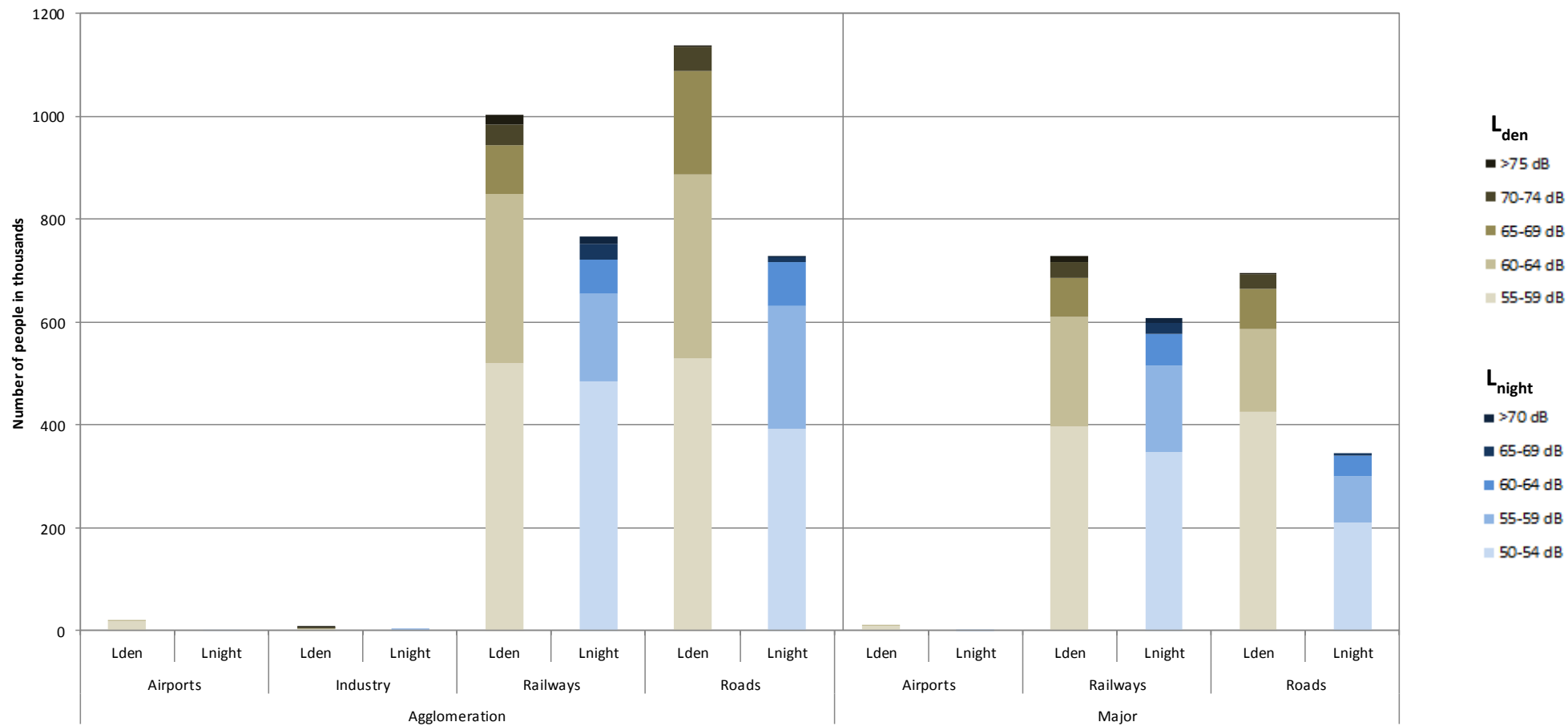
Noise sources covered by this assessment		Trends on noise exposure 2007 - 2012																																													
	END noise sources	<p>Trends on noise exposure show, for both implementation rounds:</p> <ul style="list-style-type: none"> - For agglomerations: the relative value of people exposed to more than 55 dB L_{den} and to more than 50 dB L_{night} due to different noise sources (values are expressed in %). - For major airports: total number of people exposed to more than 55 dB L_{den} and to more than 50 dB L_{night} (values are expressed in real numbers). <p>Major airports:</p> <table border="1"> <thead> <tr> <th rowspan="2"></th> <th colspan="2">L_{den}</th> <th colspan="2">L_{night}</th> </tr> <tr> <th>First round</th> <th>Second round</th> <th>First round</th> <th>Second round</th> </tr> </thead> <tbody> <tr> <td>Vienna International Airport</td> <td>8800</td> <td>10400</td> <td>500</td> <td>500</td> </tr> </tbody> </table> <p>Agglomerations:</p> <table border="1"> <thead> <tr> <th rowspan="2">Airports (values in %)</th> <th colspan="2">L_{den}</th> <th colspan="2">L_{night}</th> </tr> <tr> <th>First round</th> <th>Second round</th> <th>First round</th> <th>Second round</th> </tr> </thead> <tbody> <tr> <td>Vienna</td> <td>0</td> <td>0</td> <td>0</td> <td>0</td> </tr> </tbody> </table> <table border="1"> <thead> <tr> <th rowspan="2">Industry (values in %)</th> <th colspan="2">L_{den}</th> <th colspan="2">L_{night}</th> </tr> <tr> <th>First round</th> <th>Second round</th> <th>First round</th> <th>Second round</th> </tr> </thead> <tbody> <tr> <td>Vienna</td> <td>0</td> <td>0</td> <td>0</td> <td>0</td> </tr> </tbody> </table>					L_{den}		L_{night}		First round	Second round	First round	Second round	Vienna International Airport	8800	10400	500	500	Airports (values in %)	L_{den}		L_{night}		First round	Second round	First round	Second round	Vienna	0	0	0	0	Industry (values in %)	L_{den}		L_{night}		First round	Second round	First round	Second round	Vienna	0	0	0	0
	L_{den}						L_{night}																																								
	First round					Second round	First round	Second round																																							
Vienna International Airport	8800					10400	500	500																																							
Airports (values in %)	L_{den}					L_{night}																																									
	First round					Second round	First round	Second round																																							
Vienna	0	0	0	0																																											
Industry (values in %)	L_{den}		L_{night}																																												
	First round	Second round	First round	Second round																																											
Vienna	0	0	0	0																																											
Number of agglomerations	5																																														
Major roads	5311 km																																														
Major railways	2014 km																																														
Number of major airports	1																																														
Name of major airports	Vienna International Airport																																														
Name of agglomerations and number of inhabitants	<table border="0"> <tr> <td>Graz</td> <td>250653</td> </tr> <tr> <td>Innsbruck</td> <td>124951</td> </tr> <tr> <td>Linz</td> <td>212973</td> </tr> <tr> <td>Salzburg</td> <td>149201</td> </tr> <tr> <td>Vienna</td> <td>1741333</td> </tr> </table>	Graz	250653	Innsbruck	124951	Linz	212973	Salzburg	149201	Vienna	1741333																																				
Graz	250653																																														
Innsbruck	124951																																														
Linz	212973																																														
Salzburg	149201																																														
Vienna	1741333																																														

Roads (values in %)	L _{den}		L _{night}	
	First round	Second round	First round	Second round
Vienna	76	47	46	31

N/D: Data not provided or unsuitable for deriving trends (e.g. data reported for only one round)

	Decrease in population exposed
	No change
	Increase in population exposed

Number of people exposed to different noise bands per L_{den} and L_{night} (2012)

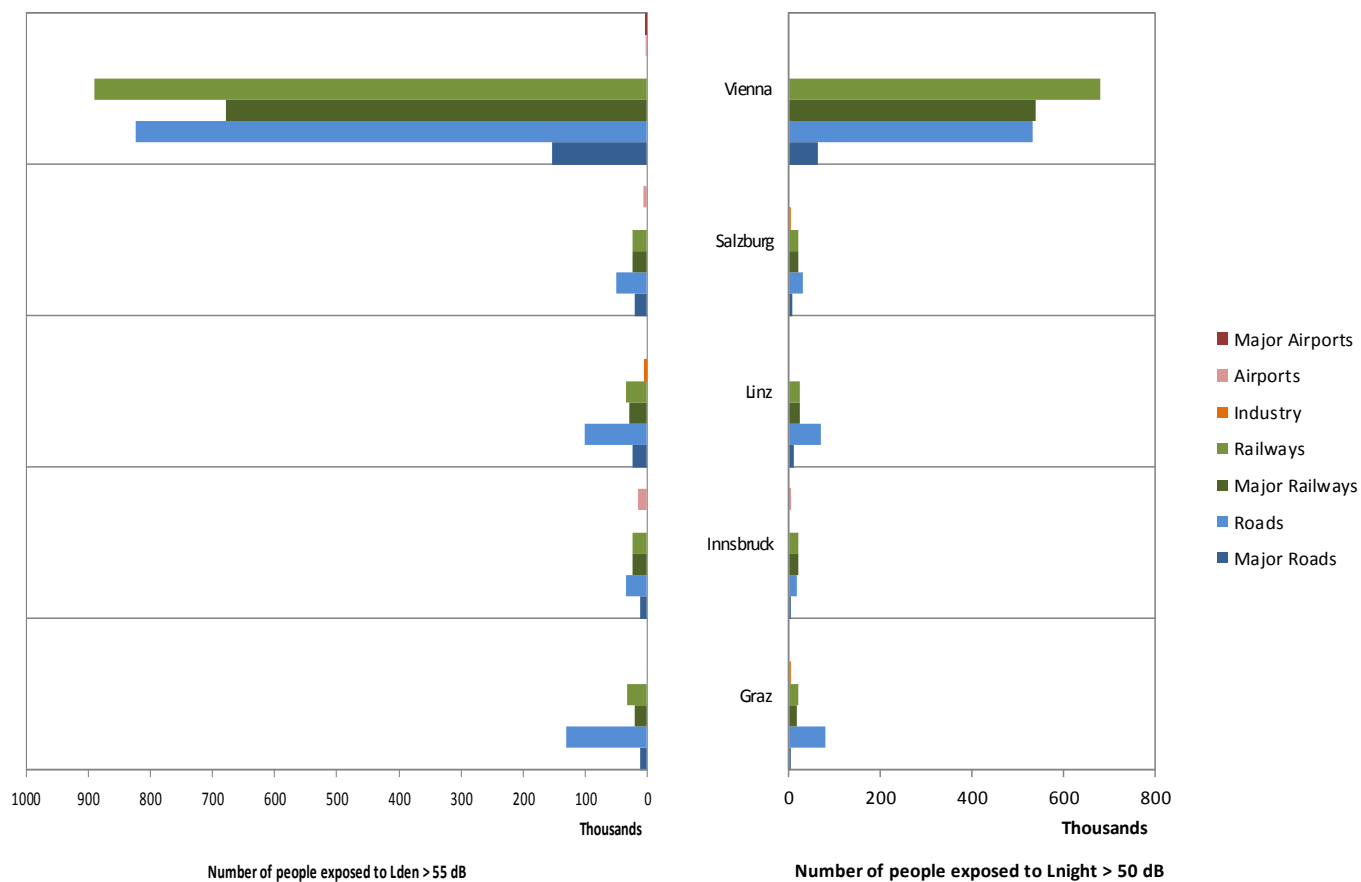


Data relating to END mandatory noise contour maps (2012)

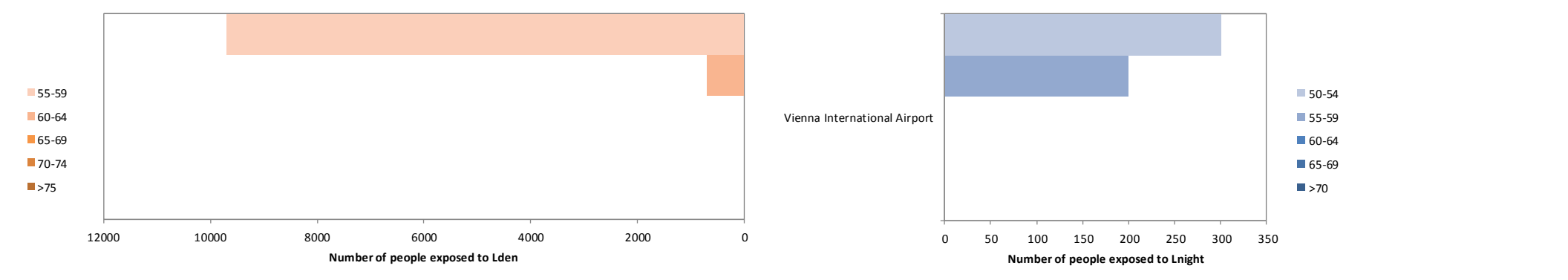
	Major roads	Major railways	Major airports
Country area (km ²)	83945.01	83945.01	83945.01
Km of noise sources	5310.60	2014.40	N/A
Area of contour map in the 55-65 dB L _{den} band (in km ²)	N/D	N/D	N/D
Share of area of contour map in the 55-65 dB L _{den} band per km of noise source reported	N/D	N/D	N/D
Percentage of the country area occupied by contour maps in the 55-65 dB L _{den} band (in %)	N/D	N/D	N/D
Area of contour map with more than 65 dB L _{den} (in km ²)	N/D	N/D	N/D
Share of area of contour map with more than 65 dB L _{den} per km of noise source reported	N/D	N/D	N/D
Percentage of the country area occupied by contour maps with more than 65 dB L _{den} (in %)	N/D	N/D	N/D

*N/A: Not applicable. N/D: No data in suitable format to perform the spatial analysis

Total number of people exposed to noise inside agglomerations (2012)



Total number of people exposed to noise from major airports outside agglomerations (2012)



For further information please consult the full Noise in Europe report at www.eea.europa.eu/themes/noise or visit the Noise Observation & Information Service for Europe at <http://noise.eionet.europa.eu/>.