

# Noise in Europe

2015 overview of policy-related data



**Romania** 

April 2016



The Environmental Noise Directive (END) requires EU Member States to assess exposure to noise from key transport and industrial sources with two initial reporting phases: 2007 and 2012. Where the recommended thresholds for day and night indicators are exceeded, action plans are to be implemented. This country fact sheet presents key statistics related to END assessments as reported to EEA by 30<sup>th</sup> June 2015 for the two key END indicators:  $L_{den}$  (day evening and night exposure) and  $L_{night}$  (night time exposure). Where possible this is presented for second round assessments reported in 2012. Trends are presented as the change in exposure from 2007 to 2012, for comparable sources only.



## ROMANIA

Noise sources covered by this assessment																																							
	<b>END noise sources</b>																																						
Number of agglomerations	19																																						
Major roads	3270 km																																						
Major railways	119 km																																						
Number of major airports	1																																						
Name of major airports	Bucharest Henry Coandă International Airport																																						
Name of agglomerations and number of inhabitants	<table border="0"> <tr><td>Arad</td><td>147922</td></tr> <tr><td>Bacau</td><td>133460</td></tr> <tr><td>Baia Mare</td><td>114925</td></tr> <tr><td>Botosani</td><td>100890</td></tr> <tr><td>Braila</td><td>168389</td></tr> <tr><td>Brasov</td><td>227961</td></tr> <tr><td>Bucharest</td><td>1677985</td></tr> <tr><td>Buzau</td><td>108384</td></tr> <tr><td>Cluj-Napoca</td><td>309136</td></tr> <tr><td>Constanta</td><td>254693</td></tr> <tr><td>Craiova</td><td>243765</td></tr> <tr><td>Galati</td><td>231204</td></tr> <tr><td>Iasi</td><td>263410</td></tr> <tr><td>Oradea</td><td>183123</td></tr> <tr><td>Pitesti</td><td>148264</td></tr> <tr><td>Ploiesti</td><td>222825</td></tr> <tr><td>Sibiu</td><td>137026</td></tr> <tr><td>Targu Mures</td><td>127849</td></tr> <tr><td>Timisoara</td><td>304467</td></tr> </table>	Arad	147922	Bacau	133460	Baia Mare	114925	Botosani	100890	Braila	168389	Brasov	227961	Bucharest	1677985	Buzau	108384	Cluj-Napoca	309136	Constanta	254693	Craiova	243765	Galati	231204	Iasi	263410	Oradea	183123	Pitesti	148264	Ploiesti	222825	Sibiu	137026	Targu Mures	127849	Timisoara	304467
Arad	147922																																						
Bacau	133460																																						
Baia Mare	114925																																						
Botosani	100890																																						
Braila	168389																																						
Brasov	227961																																						
Bucharest	1677985																																						
Buzau	108384																																						
Cluj-Napoca	309136																																						
Constanta	254693																																						
Craiova	243765																																						
Galati	231204																																						
Iasi	263410																																						
Oradea	183123																																						
Pitesti	148264																																						
Ploiesti	222825																																						
Sibiu	137026																																						
Targu Mures	127849																																						
Timisoara	304467																																						

### Trends on noise exposure 2007 - 2012

Trends on noise exposure show, for both implementation rounds:

- For agglomerations: the relative value of people exposed to more than 55 dB  $L_{den}$  and to more than 50 dB  $L_{night}$  due to different noise sources (values are expressed in %).
- For major airports: total number of people exposed to more than 55 dB  $L_{den}$  and to more than 50 dB  $L_{night}$  (values are expressed in real numbers).

#### Major airports:

	$L_{den}$		$L_{night}$	
	First round	Second round	First round	Second round
Bucharest Henri Coandă International Airport	3000	6500	5400	200

#### Agglomerations:

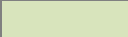
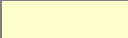

Airports (values in %)	$L_{den}$		$L_{night}$	
	First round	Second round	First round	Second round
Brasov	N/D	N/D	N/D	N/D
Bucharest	N/D	N/D	N/D	N/D
Cluj-Napoca	0.15	0	1.28	0
Constanta	N/D	N/D	N/D	N/D
Craiova	0	0	0	0
Galati	N/D	N/D	N/D	N/D
Iasi	N/D	N/D	N/D	N/D
Ploiesti	N/D	N/D	N/D	N/D
Timisoara	N/D	N/D	N/D	N/D

Industry (values in %)	L <sub>den</sub>		L <sub>night</sub>	
	First round	Second round	First round	Second round
Brasov	N/D	N/D	N/D	N/D
Bucharest	N/D	N/D	N/D	N/D
Cluj-Napoca	0.28	0	0.12	0
Constanta	N/D	N/D	N/D	N/D
Craiova	1	0	1	0
Galati	N/D	N/D	N/D	N/D
Iasi	N/D	N/D	N/D	N/D
Ploiesti	N/D	N/D	N/D	N/D
Timisoara	0	0	0	0

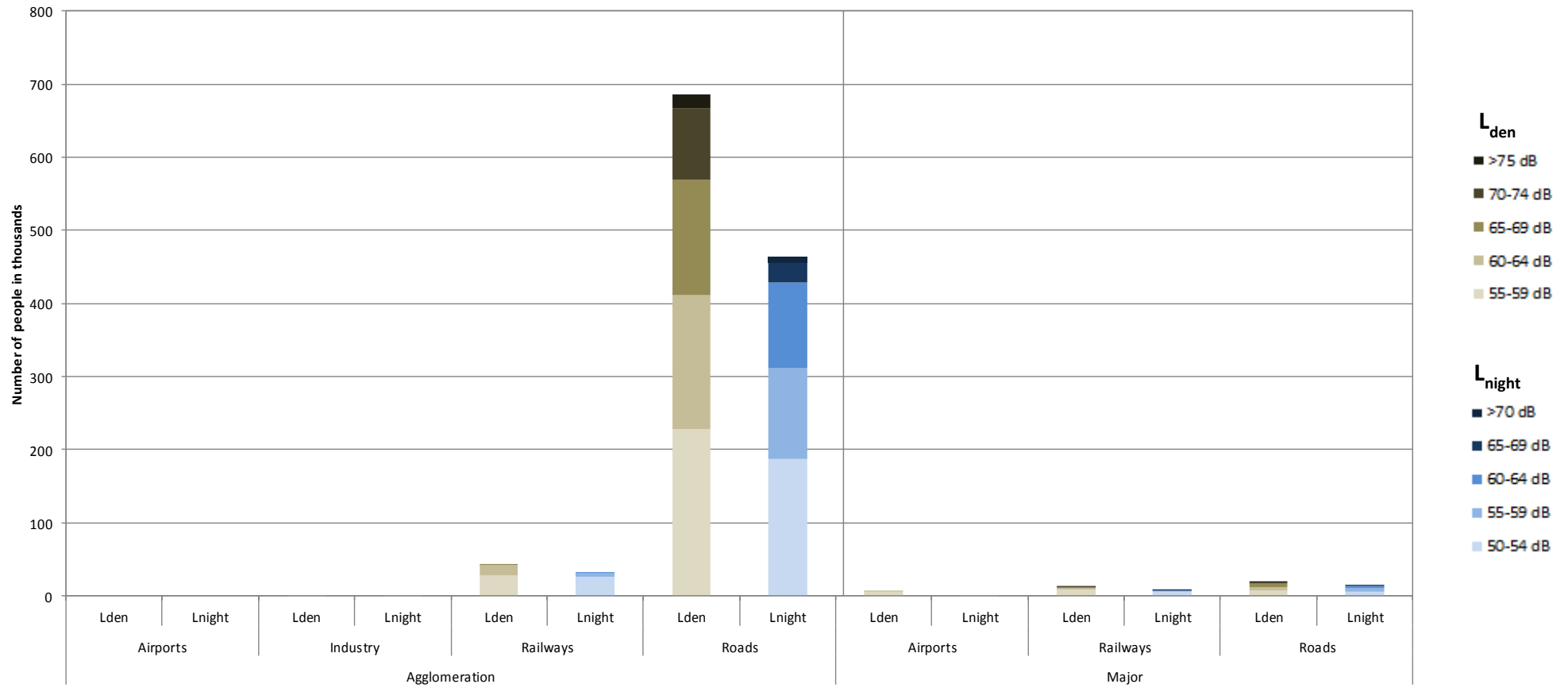
Railways (values in %)	L <sub>den</sub>		L <sub>night</sub>	
	First round	Second round	First round	Second round
Brasov	N/D	N/D	N/D	N/D
Bucharest	N/D	N/D	N/D	N/D
Cluj-Napoca	3	4	2	1
Constanta	N/D	N/D	N/D	N/D
Craiova	4	10	3	8
Galati	4	0	2	1
Iasi	N/D	N/D	N/D	N/D
Ploiesti	N/D	N/D	N/D	N/D
Timisoara	3	0	2	0

Roads (values in %)	L <sub>den</sub>		L <sub>night</sub>	
	First round	Second round	First round	Second round
Brasov	N/D	N/D	N/D	N/D
Bucharest	N/D	N/D	N/D	N/D
Cluj-Napoca	64	16	34	12
Constanta	N/D	N/D	N/D	N/D
Craiova	36	87	11	70
Galati	55	44	36	25
Iasi	N/D	N/D	N/D	N/D
Ploiesti	N/D	N/D	N/D	N/D
Timisoara	49	21	42	15

N/D: Data not provided or unsuitable for deriving trends (e.g. data reported for only one round)

	Decrease in population exposed
	No change
	Increase in population exposed

## Number of people exposed to different noise bands per $L_{den}$ and $L_{night}$ (2012)



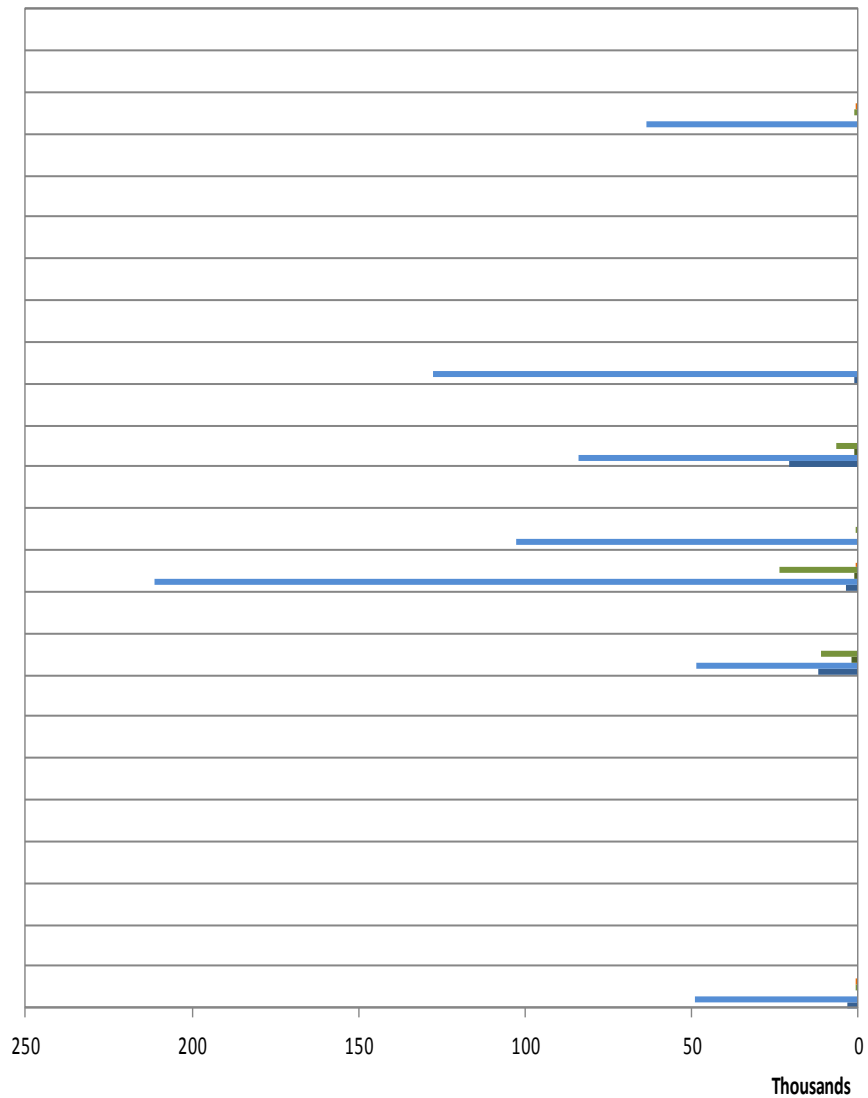
Data not provided for industry, airports, roads and railways in 12 agglomerations.  
 Data not applicable for airport noise in 3 agglomerations.

## Data relating to END mandatory noise contour maps (2012)

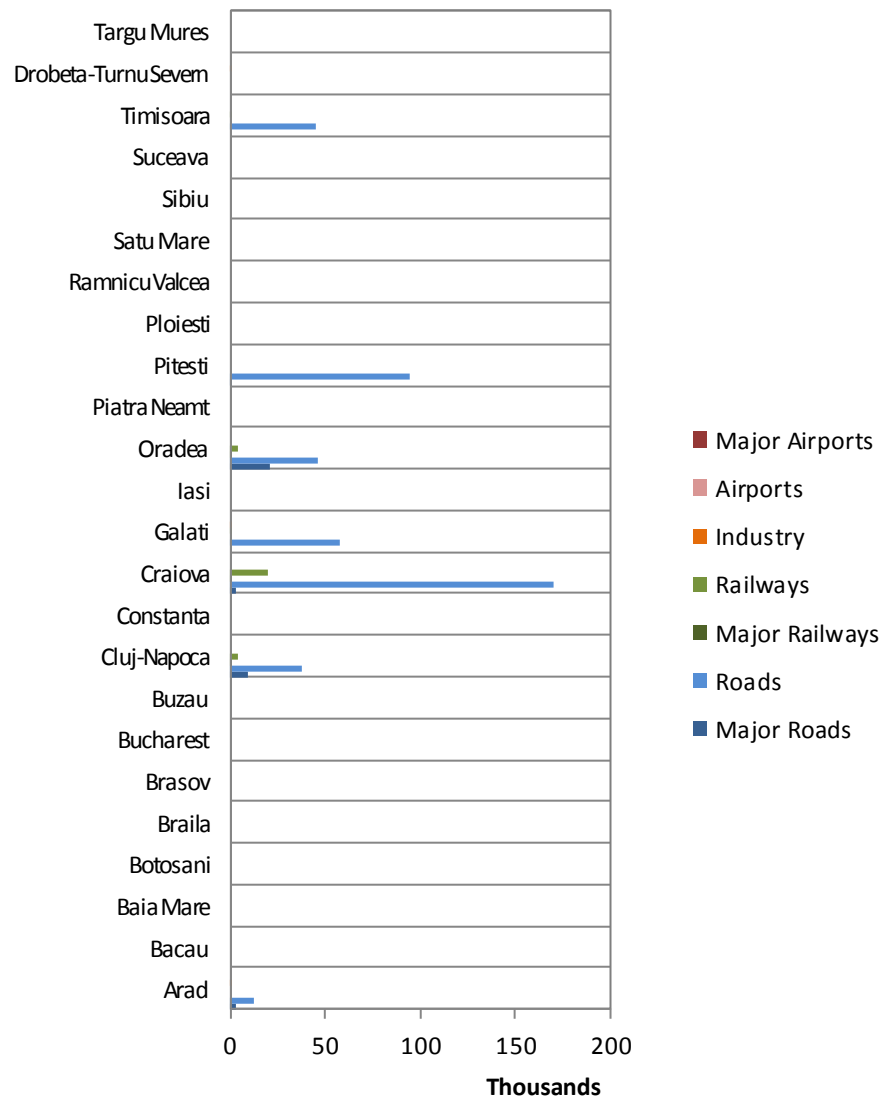
	Major roads	Major railways	Major airports
Country area (km <sup>2</sup> )	237377.06	237377.06	237377.06
Km of noise sources	N/D	119.28	N/A
Area of contour map in the 55-65 dB L <sub>den</sub> band (in km <sup>2</sup> )	N/D	N/D	N/D
Share of area of contour map in the 55-65 dB L <sub>den</sub> band per km of noise source reported	N/D	N/D	N/D
Percentage of the country area occupied by contour maps in the 55-65 dB L <sub>den</sub> band (in %)	N/D	N/D	N/D
Area of contour map with more than 65 dB L <sub>den</sub> (in km <sup>2</sup> )	N/D	N/D	N/D
Share of area of contour map with more than 65 dB L <sub>den</sub> per km of noise source reported	N/D	N/D	N/D
Percentage of the country area occupied by contour maps with more than 65 dB L <sub>den</sub> (in %)	N/D	N/D	N/D

\*N/A: Not applicable. N/D: No data in suitable format to perform the spatial analysis

# Total number of people exposed to noise inside agglomerations (2012)



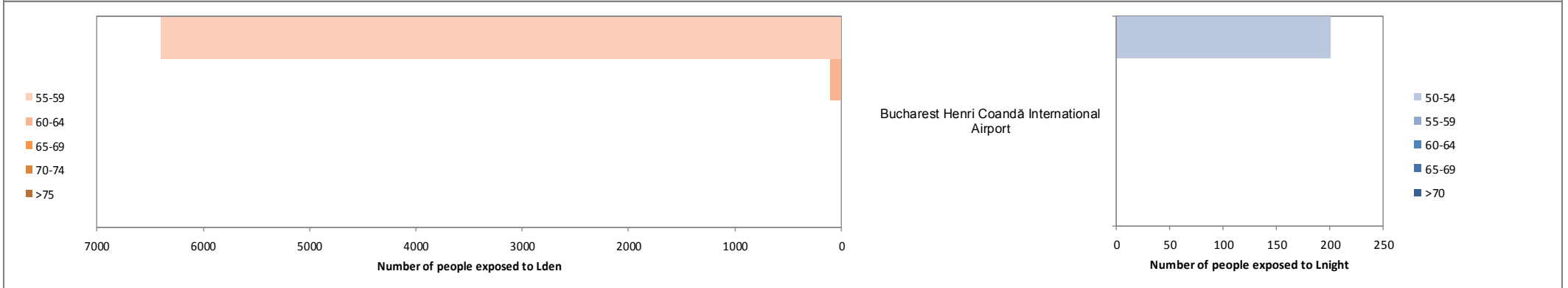
Number of people exposed to Lden > 55 dB



Number of people exposed to Lnight > 50 dB



## Total number of people exposed to noise from major airports outside agglomerations (2012)



For further information please consult the full Noise in Europe report at [www.eea.europa.eu/themes/noise](http://www.eea.europa.eu/themes/noise) or visit the Noise Observation & Information Service for Europe at <http://noise.eionet.europa.eu/>.