

Noise in Europe

2015 overview of policy-related data



Switzerland 

April 2016



The Environmental Noise Directive (END) requires EU Member States to assess exposure to noise from key transport and industrial sources with two initial reporting phases: 2007 and 2012. Where the recommended thresholds for day and night indicators are exceeded, action plans are to be implemented. This country fact sheet presents key statistics related to END assessments as reported to EEA by 30th June 2015 for the two key END indicators: L_{den} (day evening and night exposure) and L_{night} (night time exposure). Where possible this is presented for second round assessments reported in 2012. Trends are presented as the change in exposure from 2007 to 2012, for comparable sources only.




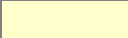

SWITZERLAND

Noise sources covered by this assessment		Trends on noise exposure 2007 - 2012																	
	END noise sources	Trends on noise exposure show, for both implementation rounds:																	
Number of agglomerations	13	<ul style="list-style-type: none"> - For agglomerations: the relative value of people exposed to more than 55 dB L_{den} and to more than 50 dB L_{night} due to different noise sources (values are expressed in %). - For major airports: total number of people exposed to more than 55 dB L_{den} and to more than 50 dB L_{night} (values are expressed in real numbers). 																	
Major roads	5926 km																		
Major railways	2377 km																		
Number of major airports	3																		
Name of major airports	EuroAirport Basel–Mulhouse–Freiburg Geneva Cointrin Airport Zurich Airport	<table border="1"> <thead> <tr> <th rowspan="2"></th> <th colspan="2">L_{den}</th> <th colspan="2">L_{night}</th> </tr> <tr> <th>First round</th> <th>Second round</th> <th>First round</th> <th>Second round</th> </tr> </thead> <tbody> <tr> <td>Data for first round provided for the whole country, so trends cannot be derived for single entities</td> <td>N/D</td> <td>N/D</td> <td>N/D</td> <td>N/D</td> </tr> </tbody> </table>					L_{den}		L_{night}		First round	Second round	First round	Second round	Data for first round provided for the whole country, so trends cannot be derived for single entities	N/D	N/D	N/D	N/D
	L_{den}		L_{night}																
	First round	Second round	First round	Second round															
Data for first round provided for the whole country, so trends cannot be derived for single entities	N/D	N/D	N/D	N/D															
Name of agglomerations and number of inhabitants	Baden-Brugg 115722 Basel 497973 Bern 350792 Fribourg 102963 Geneva 521396 Lausanne 330865 Lucerne 207612 Lugano 134972 Olten-Zofingen 109147 St. Gallen 149592 Winterthur 136956 Zug 106560 Zurich 1170203	<table border="1"> <thead> <tr> <th rowspan="2">Airports (values in %)</th> <th colspan="2">L_{den}</th> <th colspan="2">L_{night}</th> </tr> <tr> <th>First round</th> <th>Second round</th> <th>First round</th> <th>Second round</th> </tr> </thead> <tbody> <tr> <td>Data for first round provided for the whole country, so trends cannot be derived for single entities</td> <td>N/D</td> <td>N/D</td> <td>N/D</td> <td>N/D</td> </tr> </tbody> </table>				Airports (values in %)	L_{den}		L_{night}		First round	Second round	First round	Second round	Data for first round provided for the whole country, so trends cannot be derived for single entities	N/D	N/D	N/D	N/D
Airports (values in %)	L_{den}		L_{night}																
	First round	Second round	First round	Second round															
Data for first round provided for the whole country, so trends cannot be derived for single entities	N/D	N/D	N/D	N/D															
		<table border="1"> <thead> <tr> <th rowspan="2">Industry (values in %)</th> <th colspan="2">L_{den}</th> <th colspan="2">L_{night}</th> </tr> <tr> <th>First round</th> <th>Second round</th> <th>First round</th> <th>Second round</th> </tr> </thead> <tbody> <tr> <td>Data for first round provided for the whole country, so trends cannot be derived for single entities</td> <td>N/D</td> <td>N/D</td> <td>N/D</td> <td>N/D</td> </tr> </tbody> </table>				Industry (values in %)	L_{den}		L_{night}		First round	Second round	First round	Second round	Data for first round provided for the whole country, so trends cannot be derived for single entities	N/D	N/D	N/D	N/D
Industry (values in %)	L_{den}		L_{night}																
	First round	Second round	First round	Second round															
Data for first round provided for the whole country, so trends cannot be derived for single entities	N/D	N/D	N/D	N/D															

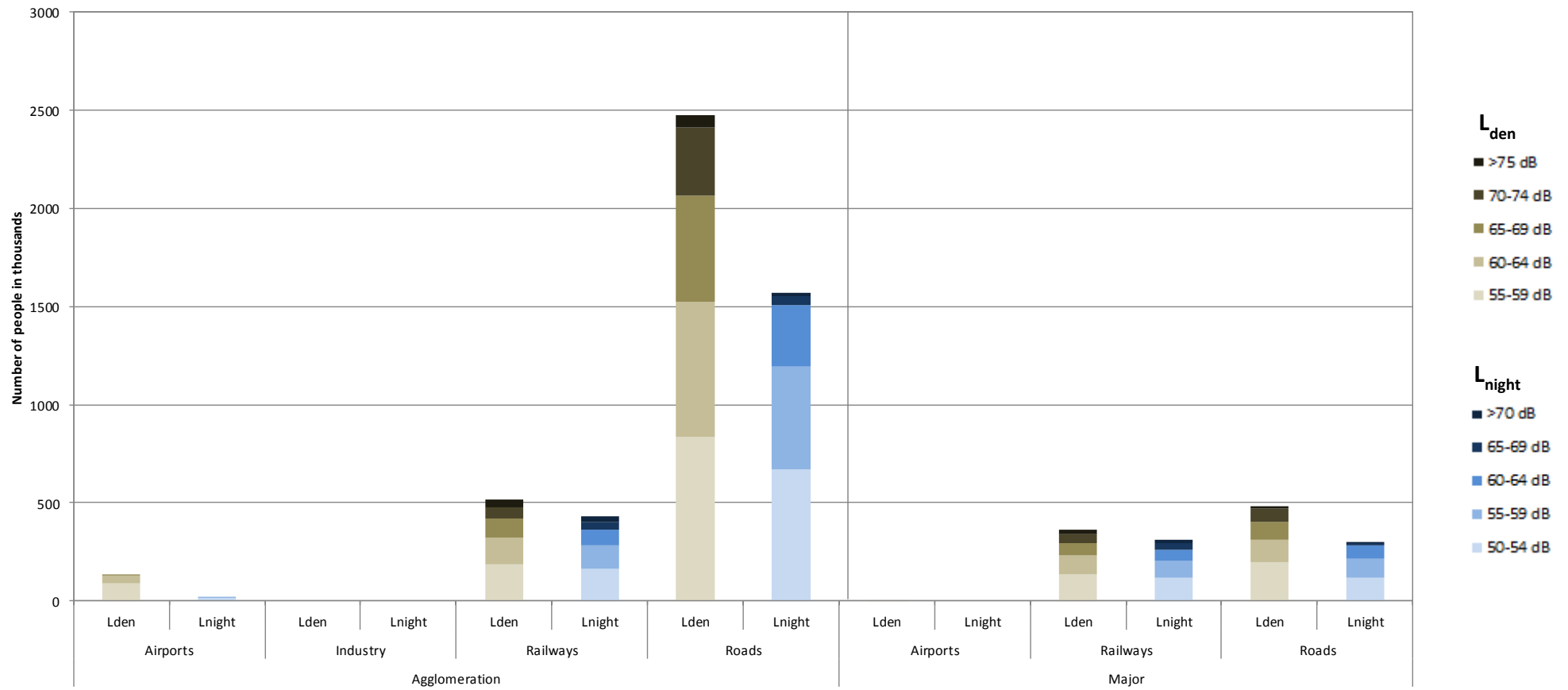
Railways (values in %)	L _{den}		L _{night}	
	First round	Second round	First round	Second round
Data for first round provided for the whole country, so trends cannot be derived for single entities	N/D	N/D	N/D	N/D

Roads (values in %)	L _{den}		L _{night}	
	First round	Second round	First round	Second round
Data for first round provided for the whole country, so trends cannot be derived for single entities	N/D	N/D	N/D	N/D

N/D: Data not provided or unsuitable for deriving trends (e.g. data reported for only one round)

	Decrease in population exposed
	No change
	Increase in population exposed

Number of people exposed to different noise bands per L_{den} and L_{night} (2012)



Data not provided for industrial noise in 13 agglomerations.

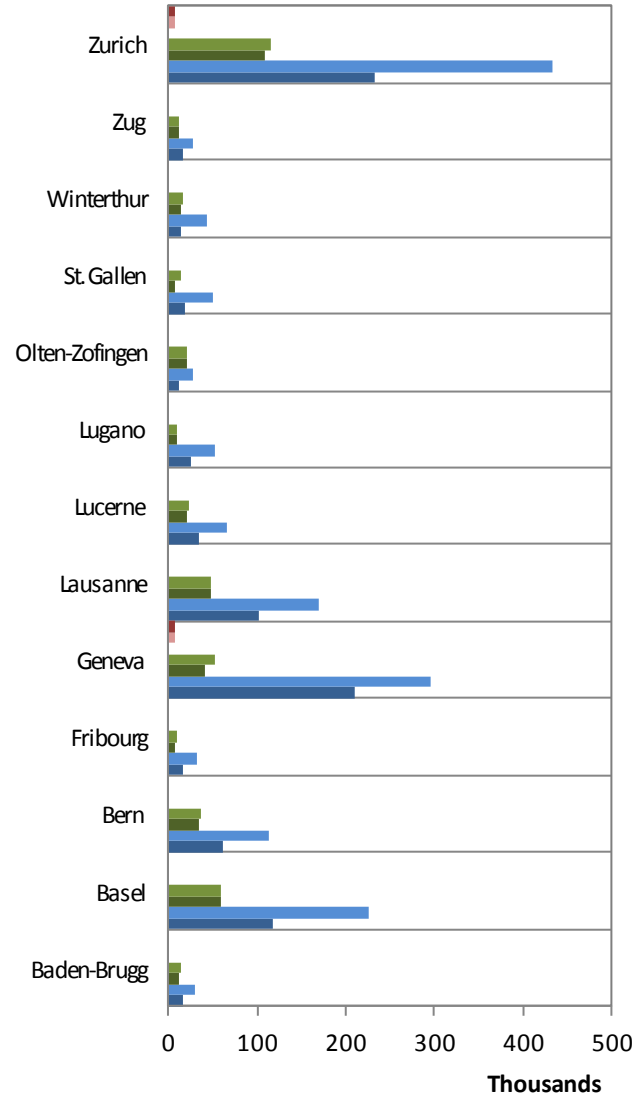
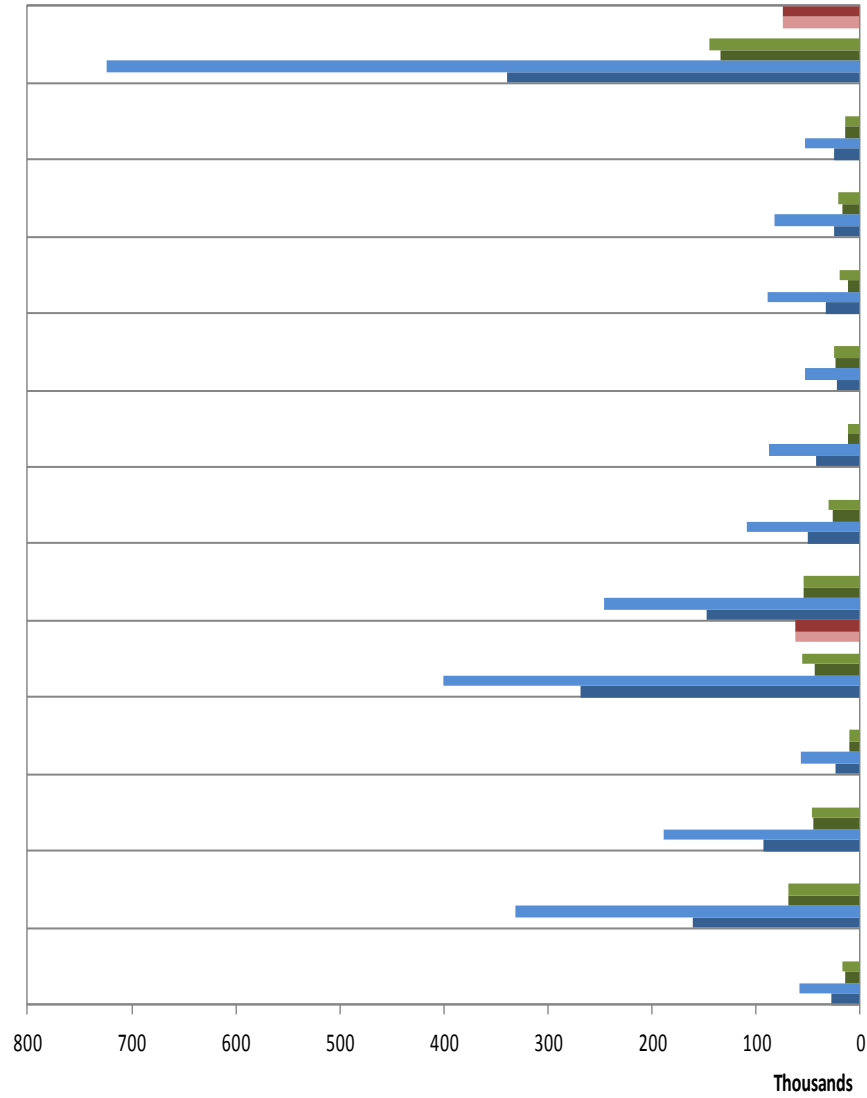
Data not provided for major airports.

Data relating to END mandatory noise contour maps (2012)

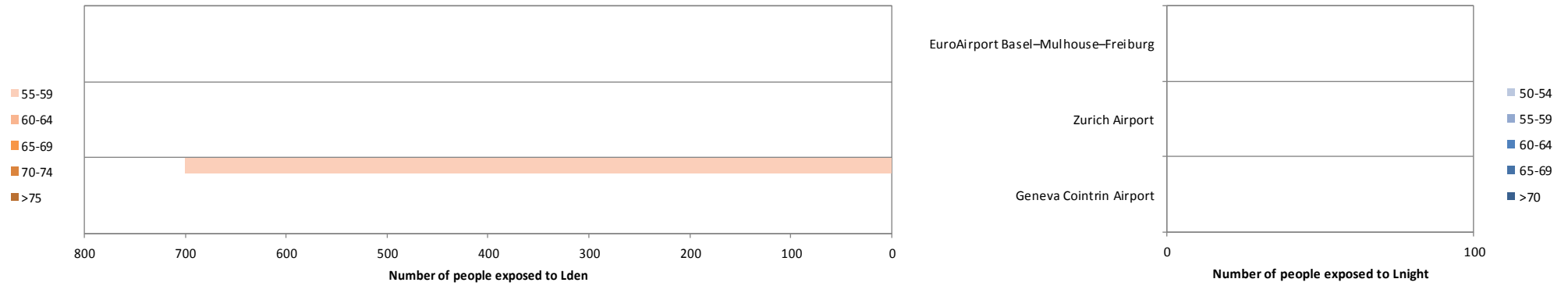
	Major roads	Major railways	Major airports
Country area (km ²)	41489.24	41489.24	41489.24
Km of noise sources	5925.64	2377.14	N/A
Area of contour map in the 55-65 dB L _{den} band (in km ²)	858.75	444.74	0.58
Share of area of contour map in the 55-65 dB L _{den} band per km of noise source reported	0.14	0.19	N/D
Percentage of the country area occupied by contour maps in the 55-65 dB L _{den} band (in %)	2.07	1.08	0.00
Area of contour map with more than 65 dB L _{den} (in km ²)	411.53	226.43	0.08
Share of area of contour map with more than 65 dB L _{den} per km of noise source reported	0.07	0.10	N/D
Percentage of the country area occupied by contour maps with more than 65 dB L _{den} (in %)	0.99	0.55	0.00

*N/A: Not applicable. N/D: No data in suitable format to perform the spatial analysis

Total number of people exposed to noise inside agglomerations (2012)



Total number of people exposed to noise from major airports outside agglomerations (2012)



For further information please consult the full noise in Europe report at www.eea.europa.eu/themes/noise or visit the Noise Observation & Information Service for Europe at <http://noise.eionet.europa.eu/>.