

Slovenian bathing water quality in 2020



Slovenia



June 2021

Photo: © Marco Verch/Flickr



Bathing water quality in the season of 2020

Slovenia

Under the provisions of the [Bathing Water Directive](#), more than 22 000 bathing waters are monitored in Europe each season. The monitoring data and other information regarding bathing water management are reported to the European Environment Agency by 30 reporting countries in Europe, to be assessed for the annual European report and more detailed national reports.

1. BWD reporting in the season of 2020

Bathing waters in the season 2020		Bathing water quality in the season of 2020	
Total reported	47	Excellent	40 (85.1%)
Coastal	21	Good	4 (8.5%)
Inland	26	Sufficient	3 (6.4%)
First identified in 2020	0	Poor	0 (0%)
Delisted in 2020	0	Not classified	0 (0%)
Total reported samples	361		

The bathing waters are quality classified according to the two microbiological parameters (Escherichia coli and intestinal enterococci) defined in the Bathing Water Directive. All reported bathing waters are in line with the minimum quality standards of the Directive, thus classified “sufficient” or better.

More information at the **national bathing water portal**:

<https://www.gov.si/teme/kopalne-vode/>

2. BWD monitoring

Each bathing water that is identified by the reporting country needs to have a monitoring calendar established before the bathing season. The monitoring calendar requirements can be summarised as follows: (1) a pre-season sample is to be taken shortly before the start of each bathing season; (2) no fewer than four (alternatively, three for specific cases) samples are to be taken and analysed per bathing season; and (3) an interval between sampling dates never exceeds one month.

From the reported data, the assessment also designates effective implementation of the monitoring calendar (Table 1).

Table 1: Bathing waters in 2020 according to implementation of the monitoring calendar

	Count	Share of total [%]
Monitoring calendar implemented A bathing water satisfies monitoring calendar conditions listed above.	47	100%
Monitoring calendar not implemented A bathing water does not satisfy monitoring calendar conditions listed above. It may be quality-classified if enough samples are available in the last assessment period.	0	0%

In addition to the monitoring calendar, management specifics of the last assessment period of four years are also assessed. The status primarily indicates whether the complete dataset of four seasons is available, but also points out the reasons as to why the bathing waters do not have the complete last assessment period dataset. The latter may indicate developing conditions at the site – most importantly, whether the bathing water has been newly identified within the period, or any changes have occurred that are likely to affect the classification of the bathing water.

Table 2: Management specifics in the last assessment period of 2017–2020

	Count	Share of total [%]
Continuously monitored A bathing water has been monitored in each bathing season in the last assessment period.	47	100%
Newly identified A bathing water was identified for the first time within the last assessment period. Such status is assigned for full four years after reported.	0	0%
Quality changes A bathing water was subject to changes described in BWD Art. 4.4 within the last assessment period. Such status is assigned for full four years after reported.	0	0%
Monitoring gap A bathing water was not monitored for at least one season in the last assessment period. No quality classification is made if not enough samples are reported for the most recent season.	0	0%

3. Bathing water quality

3.1 Coastal bathing waters

Coastal bathing waters are situated on the sea coastline of Slovenia, with respective parameter thresholds defined in Annex I of the Directive. They are subject to more strict thresholds than the inland bathing waters. Quality trend for the period 2004–2020 is shown in Figure 1. Number of bathing waters by quality class for the last assessment period 2017–2020 is given in Annex I.

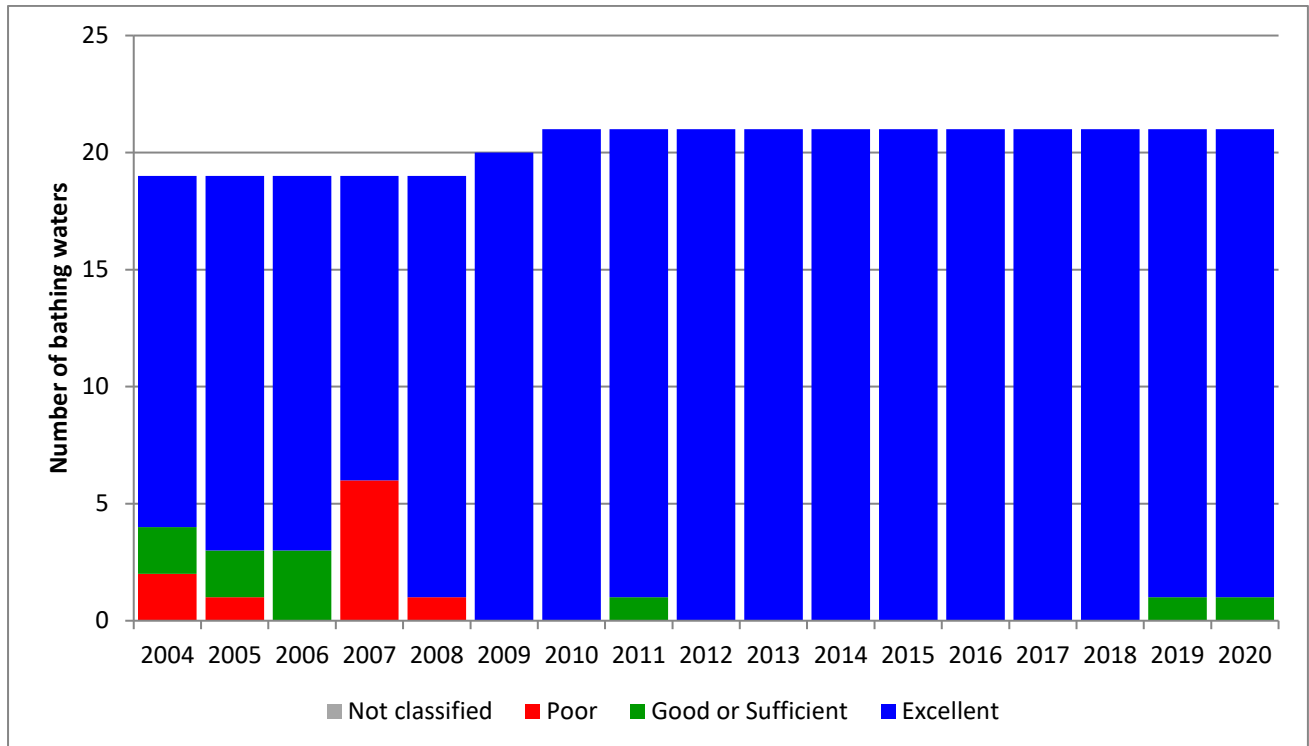


Figure 1: Trend of coastal bathing water quality. Notes: Each column represents an absolute number of bathing waters in the season. Quality classes “good” and “sufficient” are merged for comparability with the classification of the preceding Bathing Water Directive 76/160/EEC.

3.2 Inland bathing waters

Inland bathing waters are situated at rivers and lakes, featuring fresh water and with respective parameter thresholds defined in Annex I of the Directive. Quality trend for the period 2004–2020 is shown in Figure 2. Number of bathing waters by quality class for the last assessment period 2017–2020 is given in Annex I.

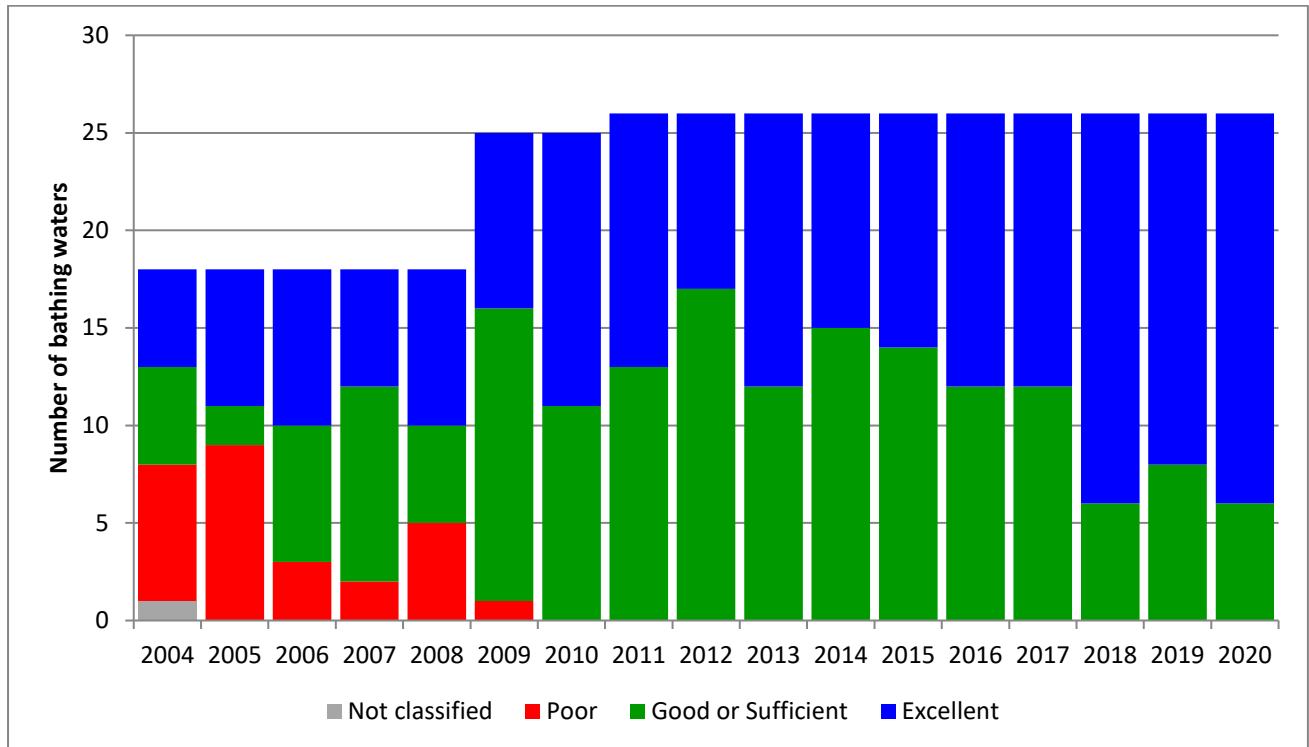


Figure 2: Trend of inland bathing water quality. Notes: Each column represents an absolute number of bathing waters in the season. Quality classes “good” and “sufficient” are merged for comparability with the classification of the preceding Bathing Water Directive 76/160/EEC.

Annex I Bathing water quality in 2017–2020

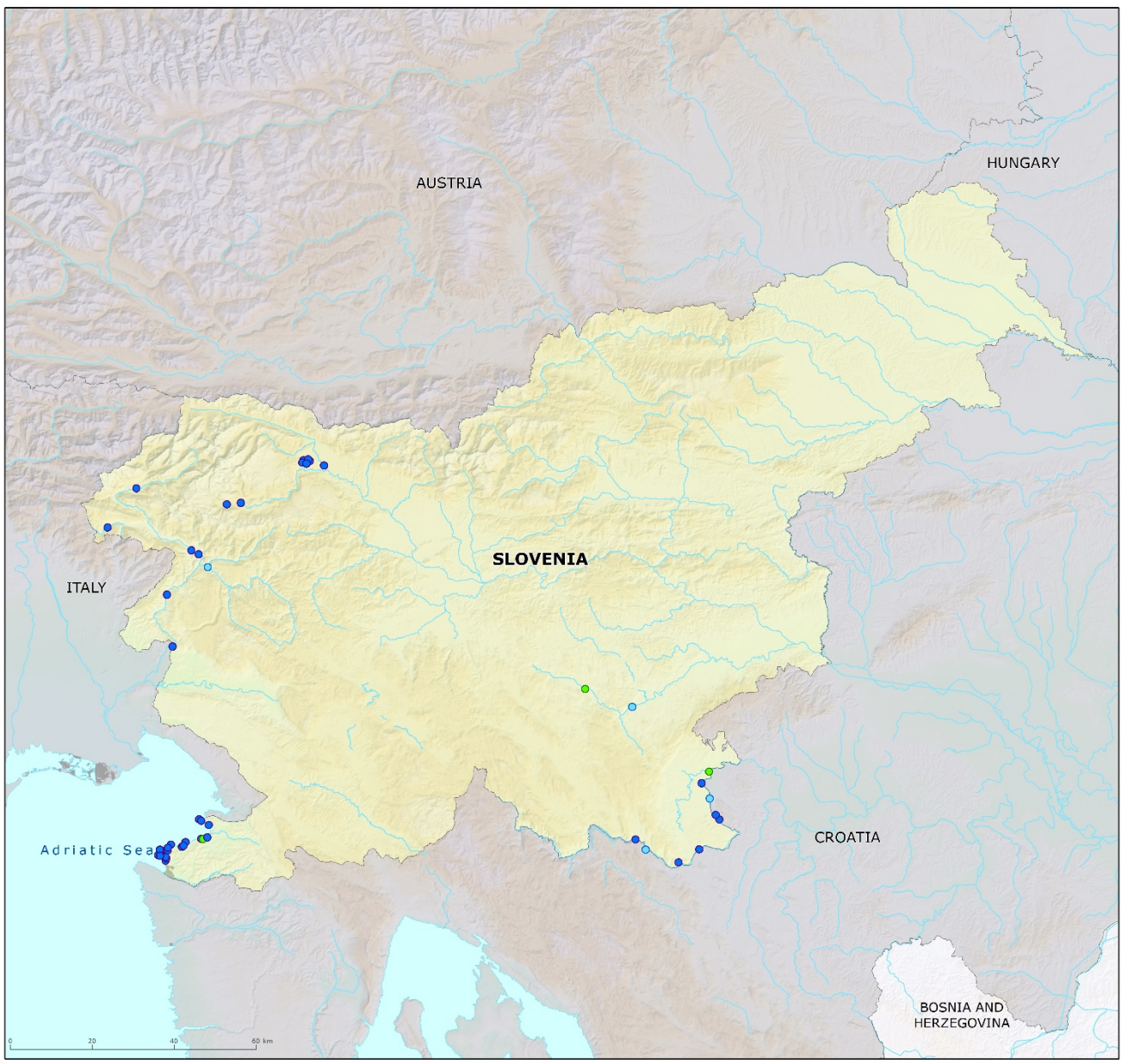
Table 3: Bathing water quality by water category and season

		Total number of bathing waters	Excellent		Good		Sufficient		Poor		Not classified	
			Count	%	Count	%	Count	%	Count	%	Count	%
Coastal	2017	21	21	100.0%	0	0.0%	0	0.0%	0	0.0%	0	0.0%
	2018	21	21	100.0%	0	0.0%	0	0.0%	0	0.0%	0	0.0%
	2019	21	20	95.2%	0	0.0%	1	4.8%	0	0.0%	0	0.0%
	2020	21	20	95.2%	0	0.0%	1	4.8%	0	0.0%	0	0.0%
Inland	2017	26	14	53.8%	11	42.3%	1	3.8%	0	0.0%	0	0.0%
	2018	26	20	76.9%	5	19.2%	1	3.8%	0	0.0%	0	0.0%
	2019	26	18	69.2%	5	19.2%	3	11.5%	0	0.0%	0	0.0%
	2020	26	20	76.9%	4	15.4%	2	7.7%	0	0.0%	0	0.0%
Total	2017	47	35	74.5%	11	23.4%	1	2.1%	0	0.0%	0	0.0%
	2018	47	41	87.2%	5	10.6%	1	2.1%	0	0.0%	0	0.0%
	2019	47	38	80.9%	5	10.6%	4	8.5%	0	0.0%	0	0.0%
	2020	47	40	85.1%	4	8.5%	3	6.4%	0	0.0%	0	0.0%

Note: Percentages may not total to 100 due to rounding.

Annex II Bathing water quality map

Map 1: Bathing waters reported during the 2020 bathing season in Slovenia



Bathing water quality

- Excellent water quality
- Good water quality
- Sufficient water quality
- Poor water quality
- Quality classification not possible
- No data
- Outside data coverage (data available, not presented on the map)

Source: National boundaries: EEA; Large rivers and lakes: EEA, WFD Article 3; Rivers in Western Balkan: TC Vode; Bathing waters data and coordinates: Slovenian authorities; Digital Elevation Model over Europe (EU-DEM): EEA.